



STAVOKKLIMA

INDUSTRIAL AIR CURTAINS

www.stavoklima.com.sa

Company Overview

Industrial Air Curtains Introduction

STAVOKLIMA is a leading European brand in air technology, known for innovative air curtains that enhance comfort and health in build-ings while cutting energy costs. Our green technology minimizes air conditioning usage, offering models suited for every type of door-whether industrial, comfort-focused, or design-oriented. With STAVOKLIMA, you're assured a perfect fit that combines func-tionality with eco-friendly performance

In tough industrial environments, open doorways pose major challenges like energy loss, temperature fluctuations, and contamination. Industrial air curtains create an invisible barrier, effectively maintaining internal climate, preventing conditioned air from escaping, and keeping out pests and pollutants. Stavoklima industrial air curtains distinguish themselves through robust construction, high-velocity airflow optimization, and advanced controls, ensuring superior energy savings and enhanced hygiene and safety compared to conventional solutions, especially vital for preserving cold in demanding applications.



Categories



1. Axi

The Axi series is designed for standard industrial applications, offering reliable performance and efficient air flow control. It ensures effective separation of indoor and outdoor environments, ideal for warehouses and loading docks.



2. Axi IP55

Elevate your industrial operations with the Axi IP55 series. Designed for superior air separation, these air curtains create an optimized indoor environment, preventing heat loss/gain, insect entry, and dust infiltration. What sets them apart is their IP55 water resistance, guaranteeing continuous, dependable operation in challenging conditions where moisture or spray is present, making them the ideal solution for any high-performance application.



3. Axi ATEX

The Axi ATEX series is engineered for hazardous or explosive environments, meeting ATEX certification standards. It provides safe and efficient air barrier solutions for industries such as chemical, petrochemical, and mining.

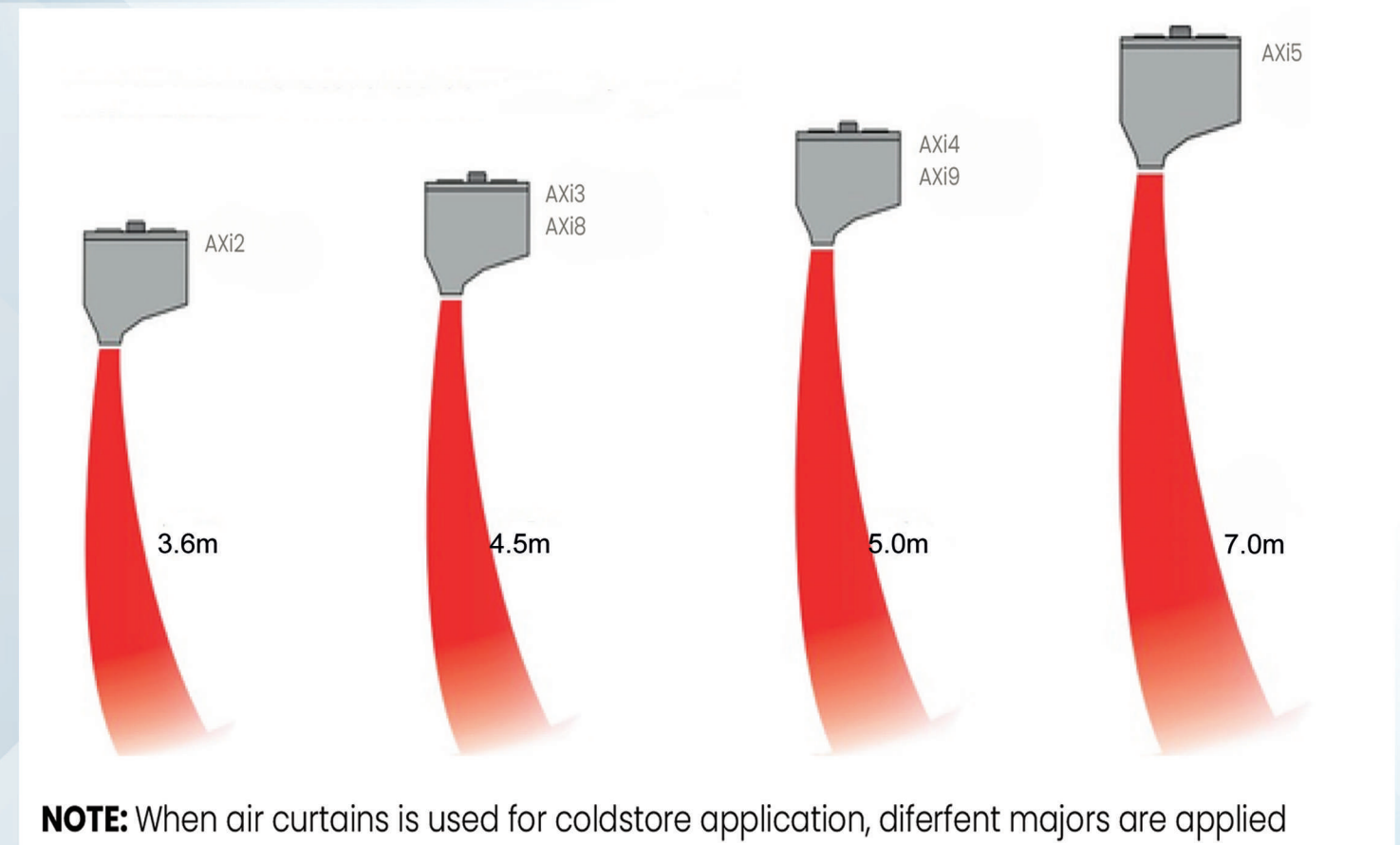


4. Axi5

The Axi5 is designed for industrial spaces that demand strong airflow across large areas. With its flexible installation options and energy-efficient operation, it's a reliable and versatile solution for a variety of applications.

Categories

Recommended mounting height of Stavoklima industrial air curtains



Intended for informative purposes only. Temperature & pressure difference, wind strength, unit length, door sequence and other effects must be considered. The length of the unit must correlate with the door width.

Axi - 230V

AXI2 Fans - Single Phase	SH(V)CP-122-4-AXI	SH(V)CP-182-4-AXI	SH(V)CP-212-4-AXI	SH(V)CP-262-4-AXI	SH(V)CP-312-4-AXI
Air volume [m3/h]	5130	7750	9625	11925	14275
Length [mm]	1250	1800	2100	2600	3100
Voltage/Power input/Current	230V/0,4kW/2,2A	230V/0,6kW/3,8A	230V/0,8kW/5,0A	230V/1,01kW/6,3A	230V/1,21kW/7,6A
Number of fans	2 x 350 mm fan	3 x 350 mm fan	4 x 350 mm fan	5 x 350 mm fan	6 x 350 mm fan
IP protection level	44	44	44	44	44
Outlet width [mm]	100	100	100	100	100
Acoustic pressure dB[A]**	55	56	56	56	57
Weight [kg]	38	52	66	81	95

AXI3 Fans - Single Phase	SH(V)CP-123-4-AXI	SH(V)CP-183-4-AXI	SH(V)CP-213-4-AXI	SH(V)CP-263-4-AXI	SH(V)CP-313-4-AXI
Air volume [m3/h]	6575	10350	12575	15625	18650
Length [mm]	1250	1800	2100	2600	3100
Voltage/Power input/Current	230V/0,5kW/2,5A	230V/0,72kW/3,8A	230V/0,96kW/5,1A	230V/1,2kW/6,4A	230V/1,44kW/7,6A
Number of fans	2 x 400 mm fan	3 x 400 mm fan	4 x 400 mm fan	5 x 400 mm fan	6 x 400 mm fan
IP protection level	54	54	54	54	54
Outlet width [mm]	100	100	100	100	100
Acoustic pressure dB[A]**	66	67	67	67	68
Weight [kg]	42	58	68	84	98

AXI4 Fans - Single Phase	SH(V)CP-124-4-AXI	SH(V)CP-184-4-AXI	SH(V)CP-214-4-AXI	SH(V)CP-264-4-AXI	SH(V)CP-314-4-AXI
Air volume [m3/h]	9075	13490	14475	18825	22850
Length [mm]	1250	1800	2100	2600	3100
Voltage/Power input/Current	230V/1,1kW/5,8A	230V/1,65kW/8,6A	230V/1,65kW/8,6A	230V/2,2kW/11,5A	230V/2,75kW/14,4A
Number of fans	2 x 450 mm fan	3 x 450 mm fan	3 x 450 mm fan	4 x 450 mm fan	5 x 450 mm fan
IP protection level	54	54	54	54	54
Outlet width [mm]	100	100	100	100	100
Acoustic pressure dB[A]**	68	68	69	70	70
Weight [kg]	50	70	75	94	113

- 1- Looking to achieve optimal performance at greater Width ? Connect with our sales team today!
- 2- Engineered for 60 Hz power systems, our air curtain delivers consistent and efficient performance wherever it's installed
- 3- The air curtain can be optionally configured to operate at 50 Hz to suit regional power requirements

- Quiet Performance: Acoustic pressure is measured at 5 meters to guarantee efficient, low-noise operation in industrial environments.
- Customizable Colors: The standard finish is RAL 7035 light grey, but a full range of RAL colors is available to match your brand.
- Durable Stainless Steel: Features high-quality 304 or 316 stainless steel housing as standard. Other materials are also offered.
- Larger Unit Options: For units exceeding 310 cm, our experts provide custom pricing and technical assistance.



Axi - 400V

AXI8 - 3ph	SH(V)CP-128-4-AXI	SH(V)CP-188-4-AXI	SH(V)CP-218-4-AXI	SH(V)CP-268-4-AXI	SH(V)CP-318-4-AXI
Air volume [m3/h]	6350	9500	11825	14725	17475
Length [mm]	4445	6650	8275	10300	12225
	1250	1800	2100	2600	3100
	0,72/0,4	1,08/0,6	1,44/0,8	1,8/1,0	2,16/1,2
Voltage/Power input/Current	1,4/0,25	2,1/0,4	2,8/0,6	3,5/0,7	4,2/0,8
	400/30/60	380/30/60	380/30/60	380/30/60	380/30/60
Number of fans	2 x 400 mm fan	3 x 400 mm fan	4 x 400 mm fan	5 x 400 mm fan	6 x 400 mm fan
IP protection level	54	54	54	54	54
Outlet width [mm]	100	100	100	100	100
Acoustic pressure dB[A]**	56	67	67	70	69
Weight [kg]	40	58	68	84	98

AXI9 - 3ph	SH(V)CP-129-4-AXI	SH(V)CP-189-4-AXI	SH(V)CP-219-4-AXI	SH(V)CP-269-4-AXI	SH(V)CP-319-4-AXI
Air volume [m3/h]	8575	12920	13775	20100	21900
Length [mm]	6000	9050	9650	12475	15325
	1250	1800	2100	2600	3100
	1,12/0,85	1,69/1,28	1,69/1,28	2,7/1,8	2,81/2,13
Voltage/Power input/Current	2,4/0,9	3,6/1,4	3,6/1,4	5,5/3,3	6,1/2,3
	400/30/60	380/30/60	380/30/60	400/30/60	380/30/60
Number of fans	2 x 450 mm fan	3 x 450 mm fan	3 x 450 mm fan	4 x 450 mm fan	5 x 450 mm fan
IP protection level	54	54	54	54	54
Outlet width [mm]	100	100	100	100	100
Acoustic pressure dB[A]**	67	69	71	72	72
Weight [kg]	49	70	75	94	113

- 1- Looking to achieve optimal performance at greater Width ? Connect with our sales team today!
- 2- Engineered for 60 Hz power systems, our air curtain delivers consistent and efficient performance wherever it's installed
- 3- The air curtain can be optionally configured to operate at 50 Hz to suit regional power requirements

- Low Noise Operation: Acoustic pressure is measured at a comfortable 5-meter distance to ensure quiet and efficient performance in industrial settings.
- Customized Frequency Options: Need 50 Hz specifications? Our team is ready to assist with tailored solutions—just reach out to your factory representative.
- Color to Match Your Brand: The standard finish is RAL 7035 light grey, but we offer a wide range of RAL colors to suit your brand identity upon request.
- Premium Stainless Steel Build: Comes in high-quality 304 or 316 stainless steel housing as standard. Other material options are also available to meet your project needs.
- Extended Size Solutions: For units longer than 310 cm, our experts are available to provide custom pricing and technical support.



AXI2 EC Fans - Single Phase	SH(V)CP-122-4-AXI	SH(V)CP-182-4-AXI	SH(V)CP-212-4-AXI	SH(V)CP-262-4-AXI	SH(V)CP-312-4-AXI
Air volume [m3/h]	5750	8625	11000	13550	16425
Length [mm]	1250	1800	2100	2600	3100
Voltage/Power input/Current	230V/0,2kW/1,6A	230V/0,3kW/2,4A	230V/0,45kW/3,6A	230V/0,6kW/4,8A	230V/0,75kW/6A
Number of fans	2 x 350 mm fan	3 x 350 mm fan	4 x 350 mm fan	5 x 350 mm fan	6 x 350 mm fan
IP protection level	44	44	44	44	44
Outlet width [mm]	100	100	100	100	100
Acoustic pressure dB[A]**	57	57	58	58	59
Weight [kg]	48	52	62	77	90

AXI3 EC Fans - Single Phase	SH(V)CP-123-4-AXI	SH(V)CP-183-4-AXI	SH(V)CP-213-4-AXI	SH(V)CP-263-4-AXI	SH(V)CP-313-4-AXI
Air volume [m3/h]	8800	13200	16600	20500	24750
Length [mm]	1250	1800	2100	2600	3100
Voltage/Power input/Current	230V/0,30kW/2,4A	230V/0,45kW/3,6A	230V/0,6kW/4,8A	230V/0,75kW/6A	230V/0,9kW/7,2A
Number of fans	2 x 400 mm fan	3 x 400 mm fan	4 x 400 mm fan	5 x 400 mm fan	6 x 400 mm fan
IP protection level	54	54	54	54	54
Outlet width [mm]	100	100	100	100	100
Acoustic pressure dB[A]**	58	58	54	59	60
Weight [kg]	52	56	66	81	95

AXI4 EC Fans - Single Phase	SH(V)CP-124-4-AXI	SH(V)CP-184-4-AXI	SH(V)CP-214-4-AXI	SH(V)CP-264-4-AXI	SH(V)CP-314-4-AXI
Air volume [m3/h]	10833	16250	16575	22000	27225
Length [mm]	1250	1800	2100	2600	3100
Voltage/Power input/Current	230V/1,70kW/4,4A	230V/1,04kW/6,6A	230V/1,04kW/6,6A	230V/1,38kW/8,8A	230V/1,73kW/11A
Number of fans	2 x 450 mm fan	3 x 450 mm fan	3 x 450 mm fan	4 x 450 mm fan	5 x 450 mm fan
IP protection level	54	54	54	54	54
Outlet width [mm]	100	100	100	100	100
Acoustic pressure dB[A]**	62	62	61	63	64
Weight [kg]	61	65	70	87	104

- 1- Looking to achieve optimal performance at greater Width ? Connect with our sales team today!
- 2- Engineered for 60 Hz power systems, our air curtain delivers consistent and efficient performance wherever it's installed
- 3- The air curtain can be optionally configured to operate at 50 Hz to suit regional power requirements

- Reduced Noise Levels: Acoustic pressure is assessed at 5 meters, ensuring calm and effective performance for industrial uses.
- Specific Frequency Needs: Do you need 50 Hz settings? Our team provides custom options; simply reach out to your factory contact.
- Brand-Consistent Colors: Standard finish is RAL 7035 light grey, with many other RAL colors available to align with your brand.
- High-Grade Stainless Construction: Built with standard 304 or 316 stainless steel housing. Alternative materials are also obtainable.
- Custom Sizing for Large Units: Units over 310 cm can receive custom pricing and technical aid from our specialists.



Axi ATEX (Explosion Proof)



AXI (ATEX) IP66 - 3ph	SH(V)CP-12ATX-4-AXI SC	SH(V)CP-18ATX-4-AXI SC	SH(V)CP-21ATX-4-AXI SC	SH(V)CP-26ATX-4-AXI SC	SH(V)CP-31ATX-4-AXI SC
Air volume [m3/h]	6925	10100	13050	16150	19210
Length [mm]	1245	1800	2100	2600	3100
Power [V]	380	380	380	380	380
Voltage frequency [Hz]	60	60	60	60	60
Nominal power [kW]	2x0,25	3x0,25	4x0,25	5x0,25	6x0,25
Nominal current [A]	2x1,4	3x1,4	4x1,4	5x1,4	6x1,4
Degree of protection [IP]	IP66	IP66	IP66	IP66	IP66
Outlet width [mm]	100	100	100	100	100
Acoustic pressure dB[A]**	68	69	70	71	71
Weight [kg]	48	63	80	97	121

- 1- Looking to achieve optimal performance at greater Width? Connect with our sales team today!
- 2- Engineered for 60 Hz power systems, our air curtain delivers consistent and efficient performance wherever it's installed
- 3- The air curtain can be optionally configured to operate at 50 Hz to suit regional power requirements

- Whisper-Quiet Performance: Acoustic pressure is measured at a 5-meter distance to ensure quiet, efficient operation—ideal for industrial environments.
- Premium Stainless Steel Housing: Available in durable 304 and 316 grades for long-lasting protection in harsh conditions. Additional material options are also available.
- Extended Unit Support: For air curtain units exceeding 310 cm, our team will provide specialized pricing and technical consultation to meet your exact needs.
- Explosion-Proof Durability: Engineered with explosion-proof motors and robust construction for maximum safety in high-risk zones.
- Certified ATEX Protection: Rated II 3G Ex h IIB T3 Gc (Gas) and II 3D Ex tc IIB T125°C (Dust) to ensure compliance in explosive atmospheres.
- Custom ATEX Grades Available: Need a different ATEX configuration? Our representatives are here to help with customized solutions.
- Built-In Safety: Each unit includes an external explosion-proof junction box (one per motor) for safe and reliable operation.
- Smart ATEX Controls: Ask our team about pricing and technical details for the ATEX Air Curtain Controller—engineered for precision and safety.



Axi9 (IP55)

AXI IP55 - 3ph	SH(V)CP-129-4-AXI	SH(V)CP-189-4-AXI	SH(V)CP-219-4-AXI	SH(V)CP-269-4-AXI	SH(V)CP-319-4-AXI
Air volume [m3/h]	9500	14400	15400	20100	25500
Length [mm]	6000	9050	9650	12475	15325
Voltage/Power input/Current	1,06/0,73	1,6/1,1	2,2/1,5	2,7/1,8	2,81/2,13
	2,2/1,3	3,3/2,0	4,4/2,7	5,5/3,3	6,1/2,3
	400/3/60	400/30/60	400/30/60	400/30/60	400/30/60
Number of fans	2 x 450 mm fan	3 x 450 mm fan	3 x 450 mm fan	4 x 450 mm fan	5 x 450 mm fan
IP protection level	55	55	55	55	55
Outlet width [mm]	100	100	100	100	100
Acoustic pressure dB[A]**	69	70	71	72	72
Weight [kg]	54	75	80	99	113

Built to thrive in the toughest environments, the IP55-rated industrial air curtain is your ultimate solution for areas exposed to high levels of dust, moisture, and direct water contact. Whether it's a bustling car wash, a high-traffic cold storage entrance, or a semioutdoor facility, this rugged air curtain delivers unmatched performance and protection. With its robust design and powerful air barrier, the IP55 effectively blocks out water, dirt, insects, and other external contaminants, maintaining a cleaner, safer, and more energy-efficient indoor environment. It's not just an air curtain – it's a shield of reliability built to handle the harshest industrial settings.



- 1- Looking to achieve optimal performance at greater Width? Connect with our sales team today!
- 2- Engineered for 60 Hz power systems, our air curtain delivers consistent and efficient performance wherever it's installed
- 3- The air curtain can be optionally configured to operate at 50 Hz to suit regional power requirements

Axi5

Axi5 Fan	SHCP-185-3-AXI SC EC	SHCP-215-3-AXI SC EC	SHCP-265-3-AXI SC EC	SHCP-315-3-AXI SC EC
Air volume [m³/h]	19000	27500	34000	40000
Length [mm]	1800	2100	2600	3100
Voltage/Power input/Current	230/2.4KW/15.2A	2×230/3.2KW/20.8A	2×230/4KW/2×13A	2×230/4.8KW/2×15.6A
IP protection Level	IP 54	IP 54	IP 54	IP 54
Accoustic pressure dB[A]** min/max	40/73	42/75	44/76	45/77
Weight [kg]	142	168	208	240

*Engineered for 60 Hz power systems, our air curtain delivers consistent and efficient performance wherever it's installed

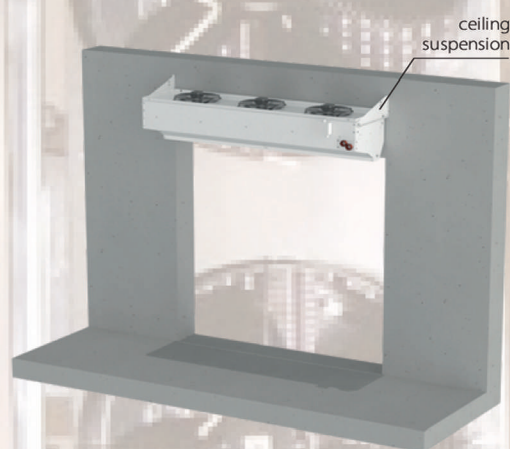
The AXi5 industrial air curtain is designed for large doors and high entrances, ensuring effective climate control by preventing heat transfer, dust, and pollutants. Built to perform in harsh industrial environments, it stands up to extreme temperatures, humidity, and all the challenges that summer conditions bring—such as heatwaves, insects, and increased airborne particles. Its advanced technology reduces HVAC costs while maintaining a comfortable and efficient workspace, making it ideal for warehouses and factories. Its powerful airflow enhances efficiency, making it ideal for warehouses and factories.



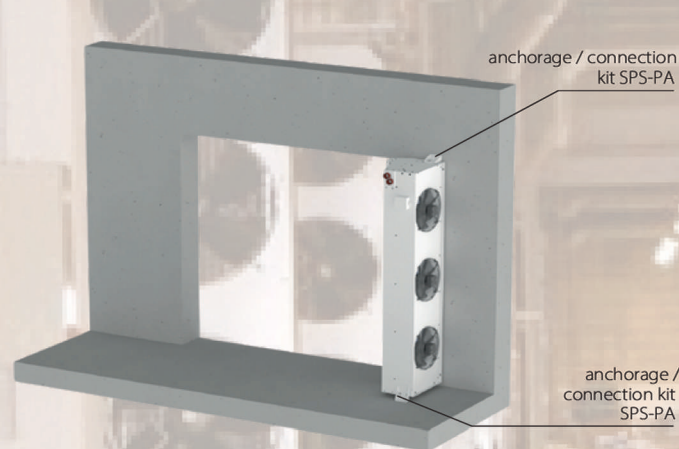
Installation

We offer flexible installation solutions to suit a wide range of industrial environments. Our air curtains can be installed in both horizontal and vertical orientations, depending on the layout and specific requirements of the space. Horizontal installation, typically above doorways, is ideal for standard entrances and loading areas, providing a powerful air barrier from top to bottom. Vertical installation, placed alongside doorways, is perfect for wider or taller openings where overhead space is limited. Both options ensure optimal performance, easy integration, and effective environmental separation in any setting.

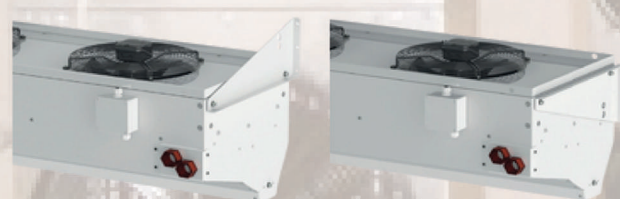
HORIZONTAL INSTALLATION



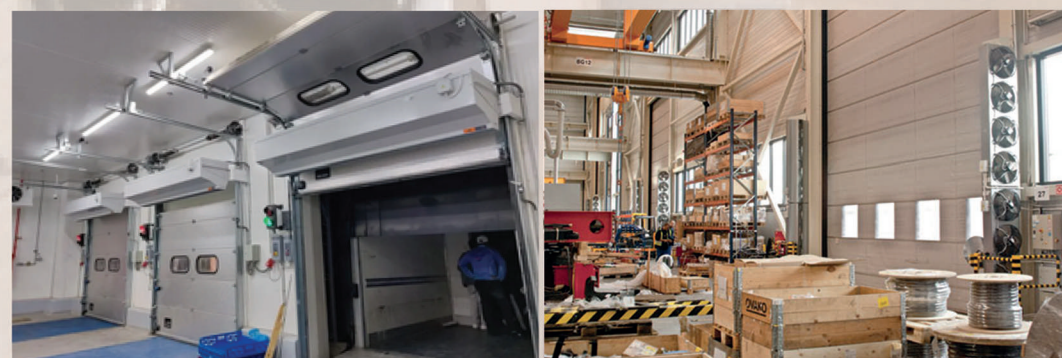
VERTICAL INSTALLATION



HORIZONTAL INSTALLATION
Mounting options - wall suspension



Mounting options - ceiling suspension



Controllers & Accessories

Anchoring / connecting set SPS-PA

The SPS-PA set permits:

- Combining of the Axi air curtains together (horizontally and vertically).
- Anchoring of the Axi air curtains to the floor in case of the vertical installation.
- Anchoring of the upper part of Axi air curtains to the side wall in case of the vertical installation.

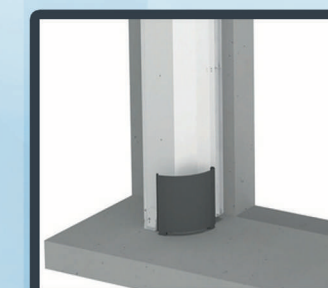
- All Axi industrial air curtains can be combined into a single assembly using the SPS-PA connecting set. The SPS-PA connecting set permits.
- Three different mounting positions depending on the required tolerance between the connected units or distance from the wall (vertical assembly).
- In case of the horizontal installation, any number of the air curtains can be combined to cover doors wider than one air curtain – this set of the units may require additional support.
- Each air curtain must be hung on all four hanging points.
- The vertical stacking of multiple units is limited to two curtains due to limited loading capacity of the equipment.

SPS-SI silentblocks (set of 4 pcs)

The vertically installed AXI industrial air curtains may tend to transfer the vibrations generated by the axial fans to surface they are mounted to. To minimize the effect, we recommend that SPS-SI set of silent blocks be installed between the floor and the SPS-PA anchoring set.

Protective frame ONR

In the case of vertical installation, we recommend fitting the air curtain with a protective impact frame as an option. It is suitable as protection of the curtain against damage by handling trucks or other types of transport. Available in galvanized steel as standard, painted in RAL color or in stainless steel on request.



Control

Air curtain controllers for 230V:

Ox

The O-controller is a 5-speed voltage regulator for fans with 230V power supply. It is equipped with a separate switch for light indication of power ON. O-series controllers allows for connection of multiple air curtains. The selection of an appropriate controller type must consider the power input of the unit (output power limitation in "A").



Type of controller	O2	O3	O5	O7	O10
Power supply	230V	230V	230V	230V	230V
Output power limitation	2 A	3 A	5 A	7 A	10 A
Protection class	IP 54				
Dimensions (W×H×D)	86×166×91 mm	123×240×125 mm	146×272×140 mm		

ROJ Light

3-speed capacity regulator, electronics for unit control with accessories placed in sheet-metal box with ventilation vents, equipped with electrical protection and capacity elements, preparation for control by door contact 24V (potential free contact), fan time delay with additional setting 0.5s – 10 h, inbuilt fuse. The ROJ Light-series controllers allows for connection of multiple air curtains. The selection of an appropriate controller type must consider the power input of the unit (output power limitation in "A").



Type of controller	ROJ light 14-10	ROJ light 30-10
Power supply	230V	230V
Output power limitation	14 A	30 A
Protection class	IP 20	
Dimensions (W×H×D)	180×320×140 mm	220×350×180 mm

UNIREG

Unireg distribution board is suitable for AC or EC units control with hot water heater and 230V motor where integration of control electronics may not be provided in the unit. The system permits use of all Ditrone, Econ and BMS input features. Unireg distribution board performance needs to be controlled depending on power input of the units (performance limitation in „A“).



	Unireg				Unireg				Unireg				Unireg			
Type of controller	DIT 4.5	DIT 6	DIT 9	DIT 14	ECON 4.5	ECON 6	ECON 9	ECON 14	BMS 4.5	BMS 6	BMS 9	BMS 14	DIT EC	ECON EC	BMS EC	
Power supply	230V															
Output power limitation	4.5 A	6 A	9 A	14 A	4.5 A	6 A	9 A	14 A	4.5 A	6 A	9 A	14 A	14 A	14 A	14 A	
Protection class	IP 20															
Dimensions (Width×Height×Depth)	300×400×170 mm															

Door Contact

DKMG magnetic door contact, changeover contact, 24V/60Hz/1A/AC15

DKM mechanical door contact

Other door contacts options are available.



Control

Air curtain controllers for 400V:

OTx

0-1-2 speed control for 3-phase (400V) motors fitted to air curtains without the possibility of connecting door contacts, but this basic unit will allow connection to a room thermostat. The selection of an appropriate controller type is given by the power input of the unit.



Type of controller	OT4	OT8	OT10	OT15
Power supply	400V	400V	400V	400V
Output power limitation	4 A	8 A	10 A	15 A
Protection class	IP 65			
Dimensions (Width×Height×Depth)	275×220×140 mm			

RTx

0-1-2 speed control for 3-phase (400V) motors fitted to air curtains with the possibility of connecting door contacts incl. fan time delay and room thermostat. The selection of an appropriate controller type is given by the power input of the unit.



Type of controller	RT4	RT8	RT10	RT15
Power supply	400V	400V	400V	400V
Output power limitation	4 A	8 A	10 A	15 A
Protection class	IP 65			
Dimensions (Width×Height×Depth)	275×220×140 mm			

Functions of controllers

Controller Type	O3	O5	O7	OT 4	OT 8	OT 10	OT 15	ROJ light 14-10	ROJ light 30-10	RT 4	RT 8	RT 10	RT 15	ROJ 14-20	ROJ 14-21	ROJ 30-20	ROJ 30-21	RO 4	RO 4-1	ROT 10	ROT 10-1	ROT 15	ROT 15-1
voltage [V]	230V			400V				230V		400V				230V				400V					
max. current of the unit (units) [A]	3	5	7	4	8	10	15	14	30	4	8	10	15	14	14	30	30	4	4	10	10	15	15
door contact*	-	-	-	-	-	-	-	✓	✓	✓	✓	✓	✓	✓	✓	✓	✓	✓	✓	✓	✓	✓	✓
door contact timer	-	-	-	-	-	-	-	-	-	✓	✓	✓	✓	✓	-	-	-	✓	✓	✓	✓	✓	✓
door contact override	-	-	-	-	-	-	-	-	-	-	-	-	-	-	-	-	-	✓	✓	✓	✓	✓	✓
room thermostat*	✓	✓	✓	✓	✓	✓	✓	✓	✓	✓	✓	✓	✓	✓	✓	✓	✓	✓	✓	✓	✓	✓	✓
external regulator	-	-	-	-	-	-	-	-	-	-	-	-	-	LS-AX-03				LS-AX-2					
anti-frost protection*	-	-	-	-	-	-	-	✓	✓	✓	✓	✓	✓	✓	✓	✓	✓	✓	✓	✓	✓	✓	✓
electrothermic valve + pump*	-	-	-	-	-	-	-	✓	✓	✓	✓	✓	✓	✓	✓	✓	✓	✓	✓	✓	✓	✓	✓
automatic mode	-	-	-	-	-	-	-	-	-	-	-	-	-	✓	✓	✓	✓	✓	✓	✓	✓	✓	✓
chained control	-	-	-	-	-	-	-	-	-	-	-	-	-	✓	✓	✓	✓	✓	✓	✓	✓	✓	✓
failure/operation signal	-	-	-	-	-	-	-	-	-	-	-	-	-	-	-	-	-	-	-	-	-	-	-

These devices can usually be connected to the switchboard, but they don't come with the standard delivery.



From the company's work



Success partners



Success partners





STAVOKLIMA®
SAUDI

STAVOKLIMA: INDUSTRIAL STRENGTH. AIR CURTAIN CONTROL



Saudi Arabia - Riyadh - Abi Bakr Al-Siddiq - Al-Mursalat District
- Al-Mursalat Building - Office No. 1

+966 537363230 | +96611 2277339



StavoklimaSaudi

info@stavoklima.com.sa
www.stavoklima.com.sa