



Design vertical air curtain

Tubex, Tubex XL



www.stavoklima.eu

CONTENT

Basic characteristics2
 Description and technical parameters3
 Technical data – Tubex, Tubex EC4
 Technical data – Tubex XL, Tubex XL EC5
 Control6
 Optional accessories7
 Ordering key8

Design air curtains Tubex, Tubex XL are suitable especially for installation in:

- banks and hotels
- office buildings
- exhibition halls and supermarkets
- boutiques, luxury shops
- entrance halls

To cover the doorspace there are the following possibilities:

- use of circulating inside air - room temperature air only
- use of circulating inside air - heated by electrical or hot water heat exchanger

Basic characteristics:

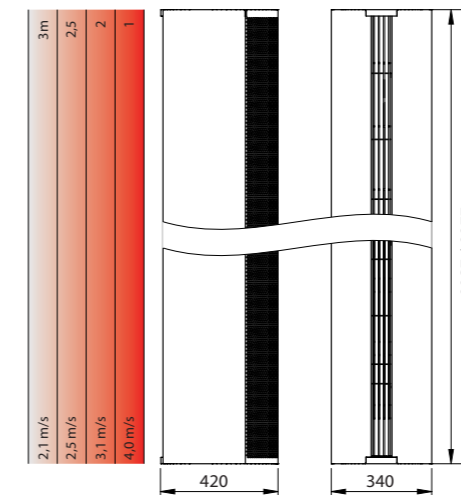
- position: vertical only
- heating: ambient (no heating) / heated (water/electric)
- for the door heights: 2,2; 2,5 m
- for the door widths: 2,0; 2,5m, both-sided version for wider opening
- colour: RAL 7047 (grey) in standard
- all other RAL palette colours on demand + colour options of grille MR



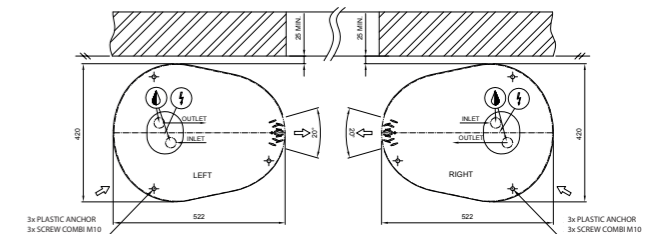
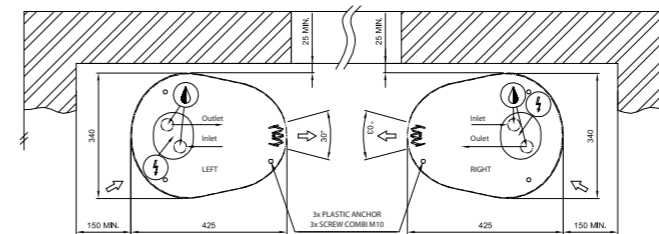
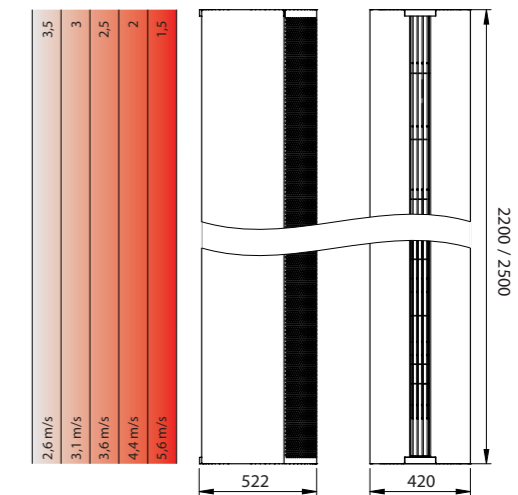
The design of the Tubex and Tubex-XL door air curtain makes it suitable for the interiors with high appearance demands, and they are an irreplaceable part of your interior for their price-performance ratio. They are characterized by curved ergonomic shapes, and compact dimensions predetermine them for easy installation in the interior of new buildings, or as a supplemental solution for the existing spaces..

The air curtains are designed for vertical, one-sided or double-sided installation; all air curtain models have highly effective directional slats in their standard version. Both models are available for hot-water or electric version, or in a version without heating.

Tubex



Tubex XL



- Contemporary unibody of the curved shape from RAL 9016, 3002 (or other RAL) painted metal sheet or stainless steel with directional exhaust slats in RAL as required.
- The fans with dynamic and static stability for high performance and quiet operation are provided in standard with thermal contacts for overload protection.
- To make the air curtain highly stable and easily fixable to the floor, the air curtain is provided with an integrated reinforced anchor plate through which media openings (hot water, electricity connections) are made. For the air curtains installed in already finished interior installations, we offer connection of the utilities from above as well.
- Dampened exhaust of the curtain for maximum noise level reduction.
- For hot-water heat exchangers, built-in desludging and automatic deaeration valves fitted in series, built-in thermo-electric valve for control of exhausted air, standard fitting of the EU3 quality filters.
- The review board as a part of the unit housing and open grid provide sufficient space for problem-free maintenance of the unit.
- The standard three-step electric heaters with heating elements are fitted with spirals with stainless braiding for effective cooling of the body; protection and operation components provide failure-free operation including full electric outfit.

Tubex

Technical data	TUBEX 2200 W	TUBEX 2200 W-NX	TUBEX 2200 E	TUBEX 2200 S	TUBEX 2500 W	TUBEX 2500 W-NX	TUBEX 2500 E	TUBEX 2500 S
Airflow [m³/h]	3480	4150	3700	3750	4150	4150	4200	4280
Water coil (water 80/60°C, ti=18°C)								
heating capacity [kW]	38,4	28,1*	-	-	45,2	32,7*	-	-
water pressure drop [kPa]**	27,1	10,6*	-	-	11,9	8,9*	-	-
water flow [m³/h]	1,7	1,6*	-	-	2,0	1,9*	-	-
Connection [DN]	25	25	-	-	25	25	-	-
Electric coil								
heating capacity alt 1 Max. [kW]	-	-	10	-	-	-	12,5	-
heating capacity alt 2 Max. [kW]	-	-	12,5	-	-	-	15	-
heating capacity alt 3 Max. [kW]	-	-	15	-	-	-	17,5	-
heating capacity alt 4 Max. [kW]	-	-	17,5	-	-	-	22,5	-
mains voltage [V]	-	-	400	-	-	-	400	-
Fan								
fan power [W]	850	1010	850	850	1010	1200	1010	1010
fan current [A]	4,5	5,4	4,5	4,5	5,4	6,3	5,4	5,4
fan voltage [V]	230	230	230	230	230	230	230	230
Controller	ECON, DITRONIC TOUCH							
Protection class	IP20	IP20	IP20	IP20	IP20	IP20	IP20	IP20
Sound level (acoustic pressure Lp(A) - distance of 3m from the unit source) db (A)	57	59	57	57	59	59	59	59
Weight [kg]	90	100	90	75	100	110	100	85

* for temperature water drop 50/35/18°C
** without valve



Technical data (EC fans)	TUBEX 2200 W	TUBEX 2200 W-NX	TUBEX 2200 S	TUBEX 2500 W	TUBEX 2500 W-NX	TUBEX 2500 S
Airflow [m³/h]	3475	3275	3550	4025	4000	4075
Water coil (water 70/50°C, ti=18°C)						
heating capacity [kW]	30,7	42,6	-	35,3	51,5	-
water pressure drop [kPa]*	18,7	12,6	-	7,9	11,2	-
water flow [m³/h]	1,3	1,8	-	1,5	2,2	-
Connection [DN]	25	25	-	25	25	-
Water coil (water 40/30°C, ti=18°C)						
heating capacity [kW]	12,1	16,9	-	13,8	20,4	-
water pressure drop [kPa]*	13,3	9,1	-	5,5	8,1	-
water flow [m³/h]	1,00	1,44	-	1,15	1,73	-
Connection [DN]	25	25	-	25	25	-
Electric coil						
fan power [W]	492	492	492	574	574	574
fan current [A]	4,2	4,2	4,2	4,9	4,9	4,9
fan voltage [V]	230	230	230	230	230	230
Controller	ECON EC, DITRONIC TOUCH					
Protection class	IP20	IP20	IP20	IP20	IP20	IP20
Sound level (acoustic pressure Lp(A) - distance of 3m from the unit source) db (A)	55	55	51	56	56	52
Weight [kg]	75	81	60	85	70	66

* without valve

Tubex XL

Technical data	TUBEX XL 2200 W	TUBEX XL 2200 W-NX	TUBEX XL 2200 E	TUBEX XL 2200 S	TUBEX XL 2500 W	TUBEX XL 2500 W-NX	TUBEX XL 2500 E	TUBEX XL 2500 S
Airflow [m³/h]	5100	5750	5400	5450	6250	6750	6480	6530
Water coil (water 80/60°C, ti=18°C)								
heating capacity [kW]	50,5	40*	-	-	57,4	44,3*	-	-
water pressure drop [kPa]**	48,0	21,6*	-	-	19,7	16,4*	-	-
water flow [m³/h]	2,2	2,3*	-	-	2,5	2,5*	-	-
Connection [DN]	25	25	-	-	25	25	-	-
Electric coil								
heating capacity alt 1 Max. [kW]	-	-	12,5	-	-	-	15	-
heating capacity alt 2 Max. [kW]	-	-	15	-	-	-	17,5	-
heating capacity alt 3 Max. [kW]	-	-	17,5	-	-	-	22,5	-
heating capacity alt 4 Max. [kW]	-	-	20	-	-	-	25	-
mains voltage [V]	-	-	400	-	-	-	400	-
Fan								
fan power [W]	1350	1620	1350	1350	1620	1890	1620	1620
fan current [A]	7,2	8,7	7,2	7,2	8,7	10	8,7	8,7
fan voltage [V]	230	230	230	230	230	230	230	230
Controller	ECON, DITRONIC TOUCH							
Protection class	IP20	IP20	IP20	IP20	IP20	IP20	IP20	IP20
Sound level (acoustic pressure Lp(A) - distance of 3m from the unit source) db (A)	60	61	60	60	62	63	62	62
Weight [kg]	110	120	105	90	120	130	115	100

* for temperature water drop 50/35/18°C
** without valve



Technical data (EC fans)	TUBEX XL 2200 W	TUBEX XL 2200 W-NX	TUBEX XL 2200 S	TUBEX XL 2500 W	TUBEX XL 2500 W-NX	TUBEX XL 2500 S
Airflow [m³/h]	5125	4800	5125	5800	5725	5800
Water coil (water 70/50°C, ti=18°C)						
heating capacity [kW]	40,5	58	-	45,9	68,9	-
water pressure drop [kPa]*	33,2	23,6	-	13,7	20,4	-
water flow [m³/h]	1,7	2,5	-	2,0	2,9	-
Connection [DN]	25	25	-	25	25	-
Water coil (water 40/30°C, ti=18°C)						
heating capacity [kW]	15,9	22,9	-	17,9	27,2	-
water pressure drop [kPa]*	23,6	17,0	-	9,6	14,6	-
water flow [m³/h]	1,4	1,9	-	1,5	2,3	-
Connection [DN]	25	25	-	25	25	-
EC fan						
fan power [W]	990	990	990	1155	1155	1155
fan current [A]	7,2	7,2	7,2	8,4	8,4	8,4
fan voltage [V]	230	230	230	230	230	230
Controller	ECON EC, DITRONIC TOUCH					
Protection class	IP20	IP20	IP20	IP20	IP20	IP20
Sound level (acoustic pressure Lp(A) - distance of 3m from the unit source) db (A)	64	64	63	63	64	63
Weight [kg]	97	102	78	108	115	87

* without valve

Control of air curtains

Comparison of Econ and Ditronic Touch controller

	Econ	Ditronic Touch
Wall-mounted control panel	✓	✓
Local fan revolutions control	✓	✓
Global system fan revolutions control – 3-step	X	✓
Global system fan revolutions control – 0–10V signal	X	✓*
ModBUS protocol fan revolutions control	X	✓
Fan revolutions control based on outdoor temperature	X	✓
Local heating control	✓	✓
Global system heating control – 3-step	X	✓
Global system heating control – 0–10V signal	X	✓*
ModBUS protocol heating control	X	✓
Heating control based on room or exhaust temperature	X	✓
Operation and failure signalling to the global system	X	✓
Week time hours	X	✓
Anti-freeze heat exchanger protection	X	✓
Heat up mode selection – winter/summer	X	✓
Keyboard lock to protect against unintentional change	X	✓
MASTER/SLAVE concatenation	✓**	✓
Optional connection of external contact	X	✓
Limiting exterior thermostat	X	✓
Device automatic operation	X	✓
Valve function configuration for door interlock	X	✓
Remote radio control	X	✓
Exhaust and room temperature display, medium temperature display	X	✓
Air curtain heating up mode	X	✓
Filter maintenance notice display	X	✓
HELPTRONIC function – interactive guide for connection of the air curtain and the controller setup	X	✓

* with an external module / ** Econ Dual controller

Optional accessories

Optional accessories for air curtain Tubex, Tubex XL

- BMS 0-10V - control the unit by BMS 0-10V
- Door contact 24V - magnetical (DKMG) door contact
- TP - room thermostat 230V for wall mounting
- PPH 1" - 300mm long flexible connection pipes with stainless steel or braided reinforcement for ease of connection from the air curtain connections to the system connections. Set consists of 2 number pipes to DN 25.
- Spare filters EU3
- Valve - According to the customer requirements, the water heat exchanger can be delivered with integrated 2-way or 3-way valve with a regulation head. The valve gearing can be thermostatic or electrothermic.

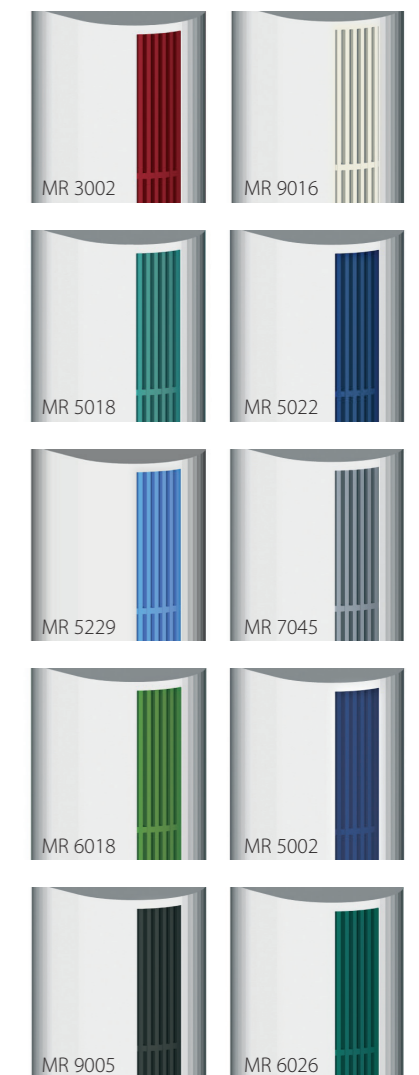
Options of unit casing:

The casing of the unit can be produced in three standard versions and is to be combined with one of the outlet grille options listed here on the right.



Options of the outlet grille

The outlet grille can be produced in a wide range of colour options and is to be combined with one of the unit casing options MR...



Ordering key

Tubex (NX) – 2200 – W – R – EC – CAS 9016/MR 3002

Tubex XL (NX) – 2200 – W – R – EC – CAS 9016/MR 3002

heater for low
-temperature
drop

2200; 2500
2200 - unit height mm
2500 - unit height mm

P - heater connec-
tions on the
right side -
front side view

L - heater connec-
tions on the
left side - front
side view

COLOUR OF UNIT CASING - CAS

CAS 9016
CAS 3002
CAS stainless
number code defines
the RAL colour

Colour of the outlet grille - MR

MR 3002	MR 9016
MR 5018	MR 5022
MR 5229	MR 7045
MR 6018	MR 5002
MR 9005	MR 6026

EC fans

W	- water heated 80/60°C event. 60/40°C
S	- ambient unit without heater
E 10	- electric heating 400V - 10 kW; unit height 2200 mm
E 12,5	- electric heating 400V - 12,5 kW; unit height 2200, 2500 mm
E 15	- electric heating 400V - 15 kW; unit height 2200, 2500 mm
E 17,5	- electric heating 400V - 17,5 kW; unit height 2200, 2500 mm
E 22,5	- electric heating 400V - 22,5 kW; unit height 2500 mm
E 25	- electric heating 400V - 25 kW; unit height 2500 mm



Distributor: