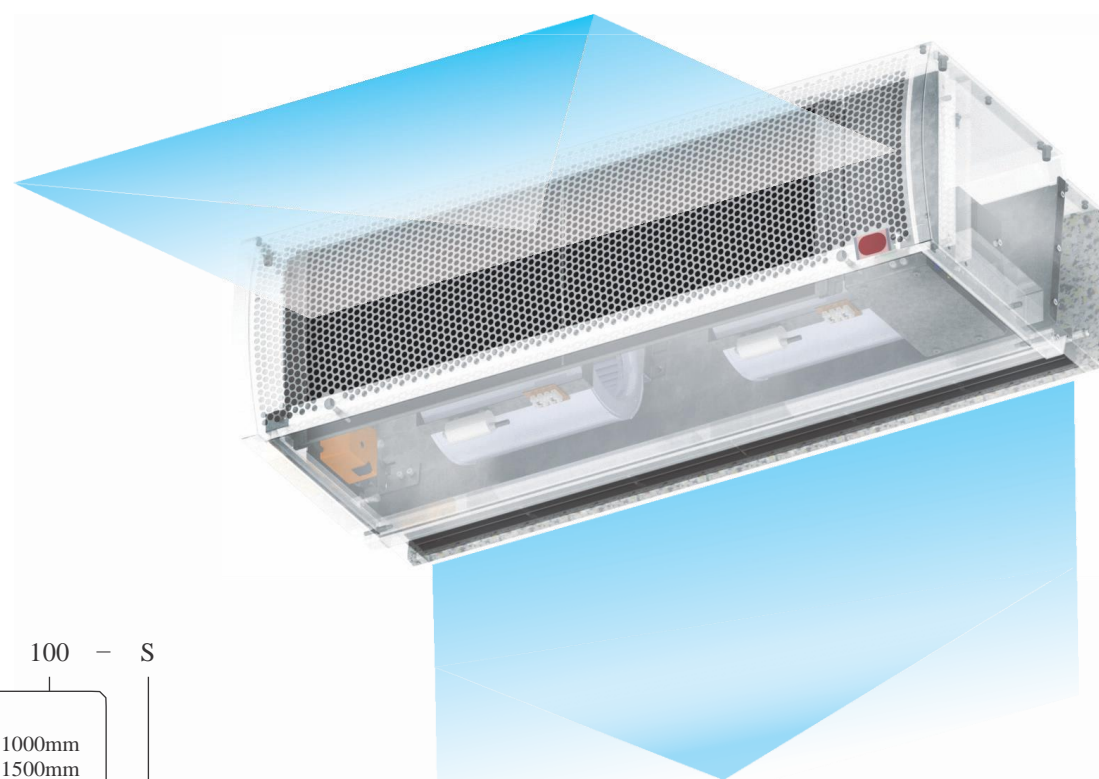
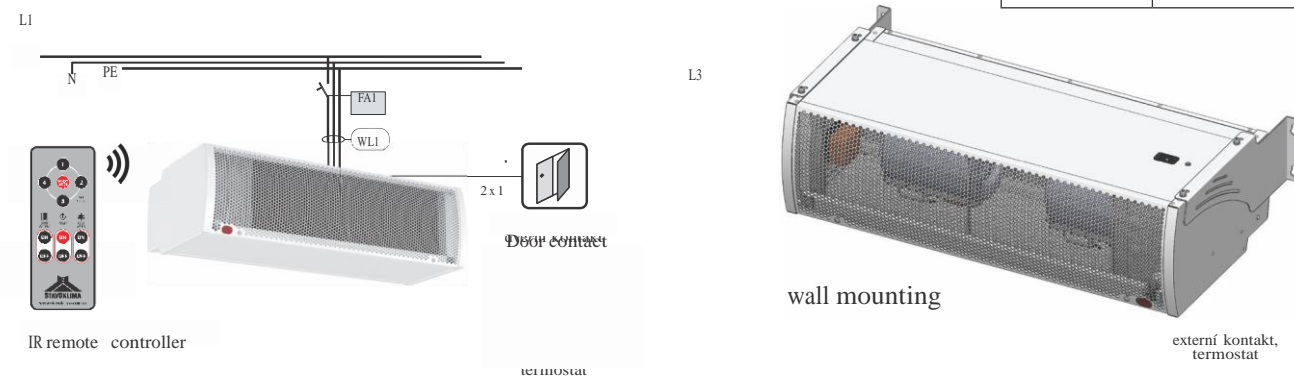




## Comfort air curtain Li0 light IR

### Diagram, Order key

Ambient air curtain Li0 light – diagram



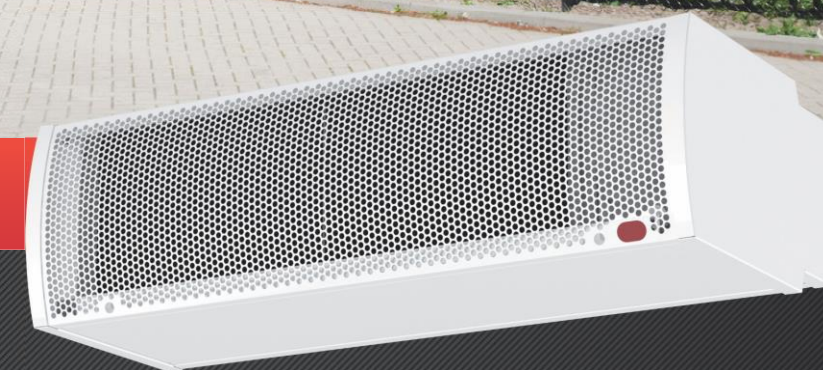
Order key:

Li0 light – 100 – S

100; 150; 200  
100 - unit length 1000mm  
150 - unit length 1500mm  
200 - unit length 2000mm

S - ambient unit without heat exchanger

Li0light 02/17/ AN



# Comfort air curtain Li0 light

Representative:

**Abdulrahman Rahmani**  
Head of Sales Department  
Stavoklima Saudi HQ  
Mob: +966 500577504  
Email: a.rahmani@stavoklima.com.sa



**STAVOKLIMA Saudi**

Dar Almawared Est. Trading  
Riyadh, Abi Baker As Siddiq Rd.  
tel. +966 11 2200 313  
Fax. +966 11 2200 313 Ext. 116  
Web: [www.stavoklima.com.sa/](http://www.stavoklima.com.sa/)



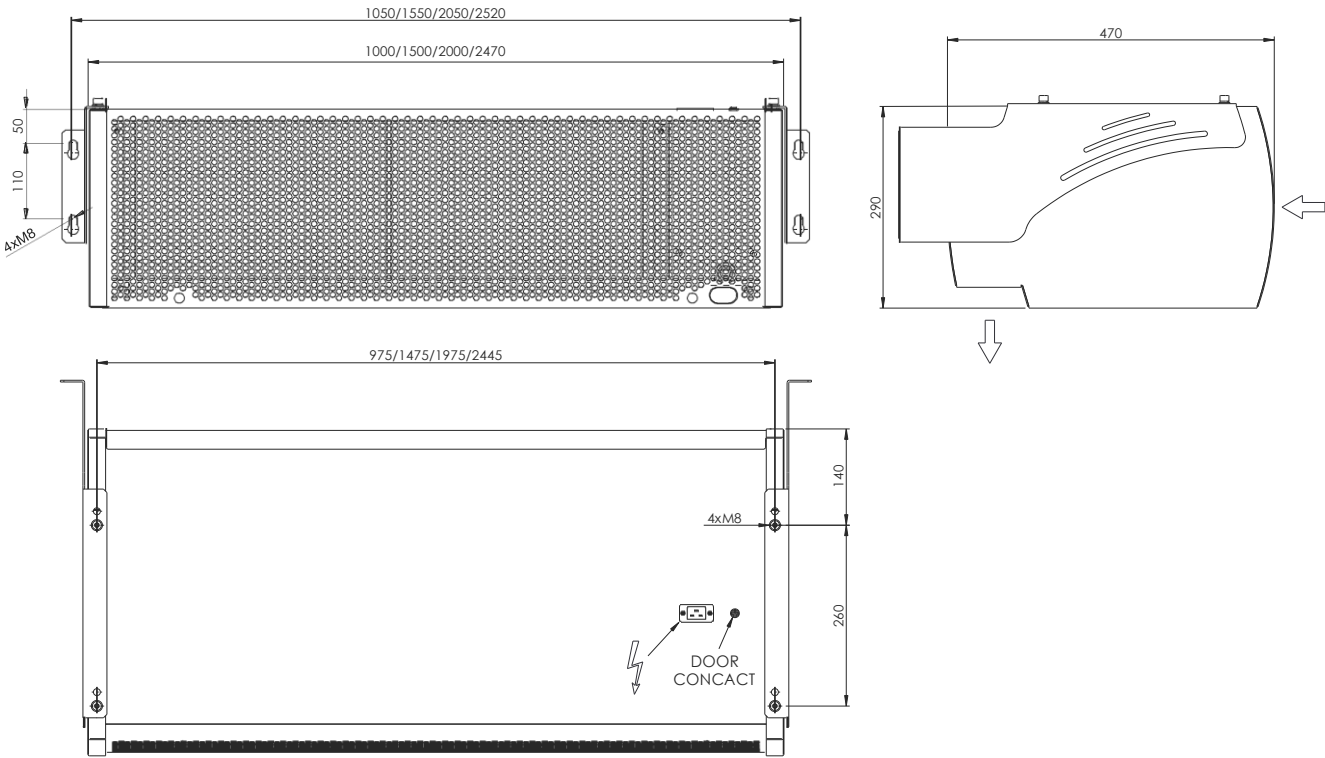
[www.stavoklima.com.sa](http://www.stavoklima.com.sa)



Description

**Li0 light air curtain** It is the core product representing the most successful Stavoklima design. Li0 light de nes a new standard in protecting your indoor climate. It is built to be universally applicable in most situations. Shopping galleries, supermarkets, hotels, banks, stores, restaurants, houses can all greatly bene t from the presence of Li0 light. Its performance is tuned to perfect balance between air volume and silent operation. The unit is equipped with additional noise supressing features to ensure the lowest possible noise level at given fan speed.

Li0 light air curtain is designed for wall mounting with alternative ceiling mounting options (accessory for ceiling mounting not part of the standard delivery). Easy installation, plug & play connection, silent operation, high build quality and maintenance-free radial fans are its strong points. Every unit is equipped with automated directable outlet louvre with three presets for normal operation, windy mode and cold-saving mode. The air curtain can be operated manually using the remote controller or automatically via magnetic door contact with a timer. The default paint is RAL 9006 (semi-matte silver).



| Air curtain                          |      | Li0 light IR 100 | Li0 light IR 150 | Li0 light IR 200 |
|--------------------------------------|------|------------------|------------------|------------------|
| Length                               | mm   | 1000             | 1500             | 2000             |
| Air volume<br>(fan speed 4, 3, 2, 1) | m³/h | 1989             | 3073             | 4176             |
|                                      |      | 1500             | 2174             | 3001             |
|                                      |      | 1249             | 2009             | 2499             |
|                                      |      | 822              | 1449             | 1777             |
| Power                                | V    | 230              | 230              | 230              |
| Number of fans                       | pcs  | 2                | 3                | 4                |
| Nominal power                        | kW   | 0,7              | 1                | 1,4              |
| Nominal current                      | A    | 3                | 4,5              | 6                |
| IP protection level                  | IP   | 22               | 22               | 22               |
| Controller                           | type | IR               | IR               | IR               |
| Outlet width                         | mm   | 60               | 60               | 60               |
| Noise level at 3 m                   | dB   | 60               | 61               | 62,5             |
| Weight                               | kg   | 37,8             | 49,4             | 64,3             |

fan speed voltage: stage 4 - 230V, stage 3 - 180V, stage 2 - 160V, stage 1 - 120V  
fans: safety margin 15% for 60 Hz voltage frequency



Description

**Li0 light accessories:**  
Magnetic door contact: For fully autonomous mode the unit is equipped with a magnetic sensor with a magnetic counterpart with a connector for fast & easy connection.



With door contact enabled, the air curtain automatically switches the fans ON in a moment when the door opens. After closing, the 30 seconds timer is activated. The unit swithes the fans OFF provided the door stays closed. If the door is opened during this period, the 30 second interval is reset. This provides much smoother operation and contributes to the longevity of the fans.

**Power cord:** The unit is equipped with a 2 meter-long power cord complying with all electrical norms valid in Saudi Arabia. The connecting point is located on the top of the unit.

Controller: Remote controller

The air curtain is controlled using a remote IR (infra red) controller that comes with the unit. For reliable control, visual contact between the unit and the remote controller is required. The controller is universal and can be used to control any Stavoklima air curtain equipped with IR receiver.

Four individual fan speed levels are available for optimal setting. Once a fan speed level is selected, all fans switch to the desired speed regardless whether manual control or autmotic control (door contact) is engaged. The unit stores the last active fan speed in the internal memory and keeps track of the fan speed setting even during shut down.

The controller also enables switching between preset modes - normal, windy and cold-saving.

NORMAL MODE:

In normal mode the adjustable outlet directs the air straight down

WINDY MODE:

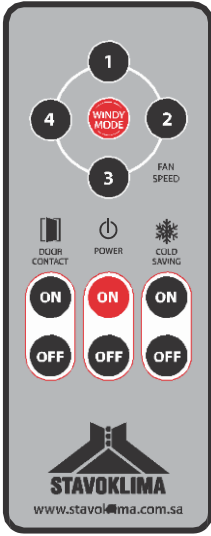
Activation of windy mode automatically switches the fans to the highest speed and angles the outlet louvre out of the door thus creating much more resilient air barrier against wind storms.

COLD-SAVING MODE:

In order to increase the preservation of indoor climate in heavily air-conditioned environments, the cold-saving mode angles the outlet louvre inside the room thus keeping the cold air accumulated on the oor from escaping through the door area.

The remote controller is equipped with a door contact override switch that enables full manual control of the air curtain regardless of the door state.

The controller is powered by standard 2x AAA battery (2x 1,5 V). The batteries are not part of the delivery.



Remote controller functions

|  |  |                                    |  |   |          |
|--|--|------------------------------------|--|---|----------|
|  | door contact switch for manual override                  | door contact needs to be connected |  | compact dimensions, wall mounting, ergonomic design               | standard |
|  | 4 fan speed levels                                       | standard                           |  | cold-saving mode for increased preservation of indoor clima       | standard |
|  | windy mode for additional protection against wind stroms | standard                           |  | EU2 lter for fan protection and suppression of airborne particles | standard |

Li Q Light IR

