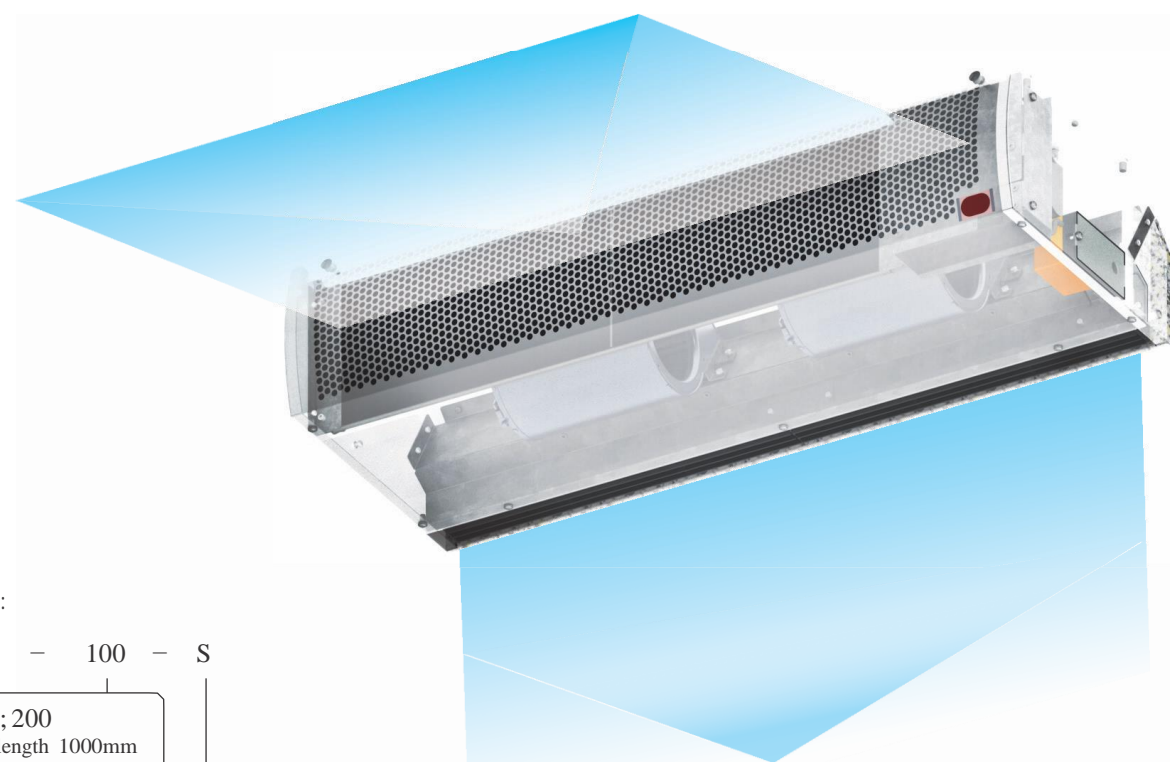
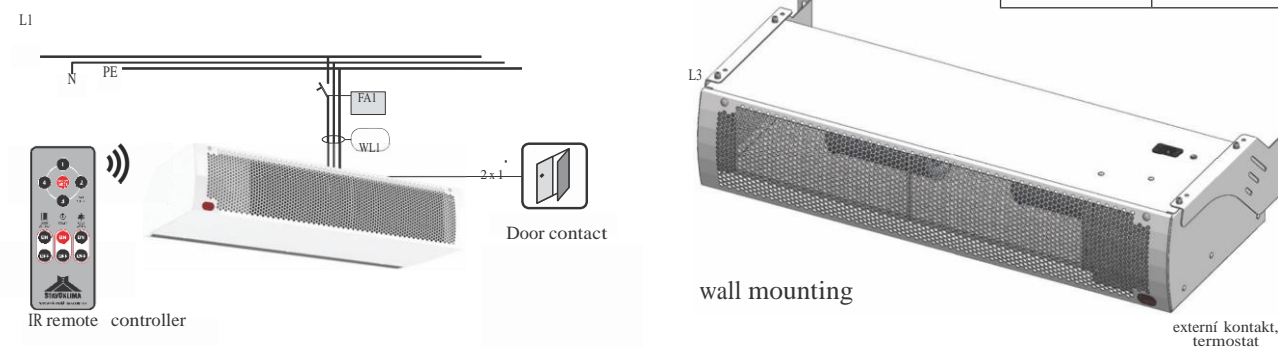




Comfort air curtain Li mini IR

Diagram, Order key

Ambient air curtain Li mini – diagram



Order key:

Li mini – 100 – S

100; 150; 200
100 - unit length 1000mm
150 - unit length 1500mm
200 - unit length 2000mm

S - ambient unit without heat exchanger

Li mini 02/17 / AN



Comfort air curtain

Li-mini

Representative:

Abdulrahman Rahmani
Head of Sales Department
Stavoklima Saudi HQ
Mob: +966 500577504
Email: a.rahmani@stavoklima.com.sa



STAVOKLIMA Saudi

Dar Almawared Est. Trading
Riyadh, Abi Baker As Siddiq Rd.
tel. +966 11 2200 313
Fax. +966 11 2200 313 Ext. 116
Web: www.stavoklima.com.sa/

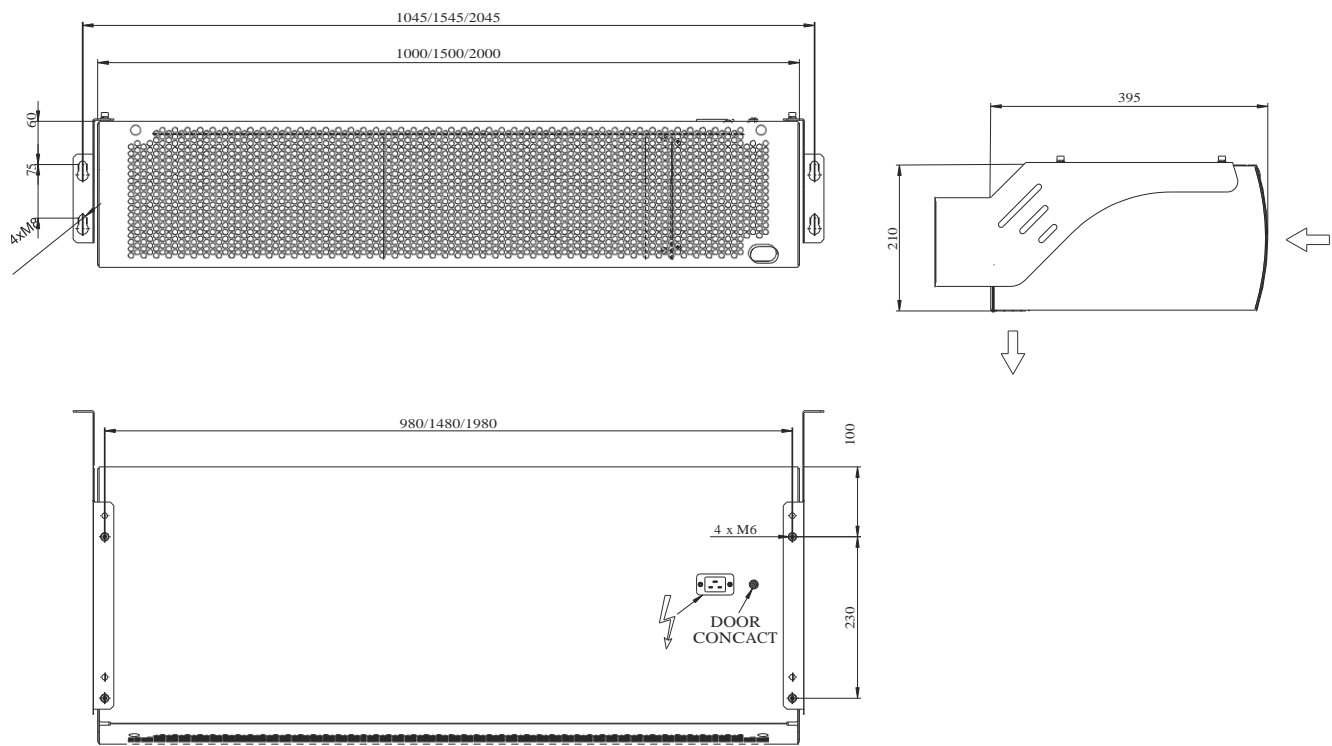




Description

Li mini air curtain Standardized dimension range, simple & functional design make Li mini the ideal solution for individual shops in large shopping galleries, boutiques, restaurants, banks and hotels. Li mini air curtain is designed for wall mounting with alternative ceiling mounting options (access- sorry for ceiling mounting not part of the standard delivery). Competitive price, easy installation, plug & play connect on, silent operation, high build quality and maintenance-free radial fans are its strong points.

Every unit is equipped with automated directable outlet louvre with three presets for normal operation, windy mode and cold-saving mode. The air curtain can be operated manually using the remote controller or automatically via magnetic door contact with a timer. The default paint is RAL 9010 (white).



Air curtain		Li mini 100 S	Li mini 150 S	Li mini 200 S
Length	mm	1000	1500	2000
Air volume (fan speed 4, 3, 2, 1)	m³/h	1131	1748	2352
		686	1348	1867
		613	1187	1642
		437	849	1189
Power	V	230	230	230
Number of fans	pcs	2	3	4
Nominal power	kW	0,4	0,66	0,87
Nominal current	A	2	2,9	3,9
IP protection level	IP	22	22	22
Controller	type	IR	IR	IR
Outlet width	mm	44	44	44
Noise level at 3 m	dB	60	61	62
Weight	kg	27,4	38,4	48,4

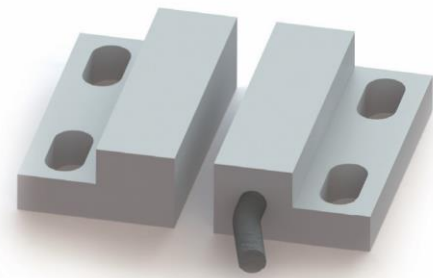
fan speed voltage: stage 4 - 230V, stage 3 - 180V, stage 2 - 160V, stage 1 - 120V
fans: safety margin 15% for 60 Hz voltage frequency



Description

Li mini accessories

Magnetic door contact: For fully autonomous mode the unit is equipped with a magnetic sensor with a magnetic counterpart with a connector for fast & easy connection.



With door contact enabled, the air curtain automatically switches the fans ON in a moment when the door opens. After closing, the 30 seconds' timer is activated. The unit switches the fans OFF provided the door stays closed. If the door is opened during this period, the 30 second interval is reset. This provides much smoother operation and contributes to the longevity of the fans.

Power cord: The unit is equipped with a 2-meter-long power cord complying with all electrical norms valid in Saudi Arabia. The connecting point is located on the top of the unit.

Controller: Remote controller

The air curtain is controlled using a remote IR (infra-red) controller that comes with the unit. For reliable control, visual contact between the unit and the remote controller is required. The controller is universal and can be used to control any Stavoklima air curtain equipped with IR receiver.

Four individual fan speed levels are available for optimal setting. Once a fan speed level is selected, all fans switch to the desired speed regardless whether manual control or automatic control (door contact) is engaged. The unit stores the last active fan speed in the internal memory and keeps track of the fan speed setting even during shut down.

The controller also enables switching between preset modes - normal, windy and cold-saving.

NORMAL MODE:

In normal mode, the adjustable outlet directs the air straight down

WINDY MODE:

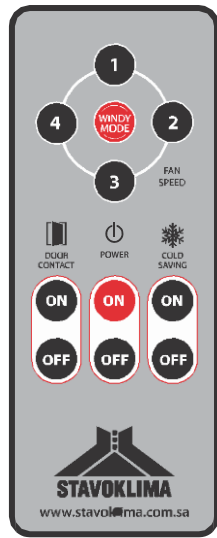
Activation of windy mode automatically switches the fans to the highest speed and angles the outlet louvre out of the door thus creating much more resilient air barrier against wind storms.

COLD-SAVING MODE:

In order to increase the preservation of indoor climate in heavily air-conditioned environments, the cold-saving mode angles the outlet louvre inside the room thus keeping the cold air accumulated on the door from escaping through the door area.

The remote controller is equipped with a door contact override switch that enables full manual control of the air curtain regardless of the door state.

The controller is powered by standard 2x AAA battery (2x 1,5 V) The batteries are not part of the delivery.



Remote controller functions

	door contact switch for manual override	door contact needs to be connected		compact dimensions, wall mounting, ergonomically design	standard
	4 fan speed levels	standard		cold-saving mode for increased preservation of indoor climate	standard
	windy mode for additional protection against wind storms	standard		EU2 filter for fan protection and suppression of airborne particles	standard

Li Mini IR

