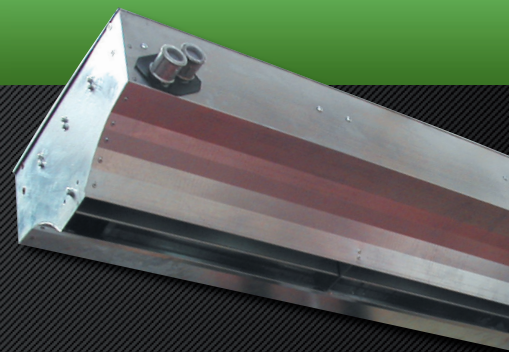




Industrial Air Curtain

Axi



www.stavoklima.eu

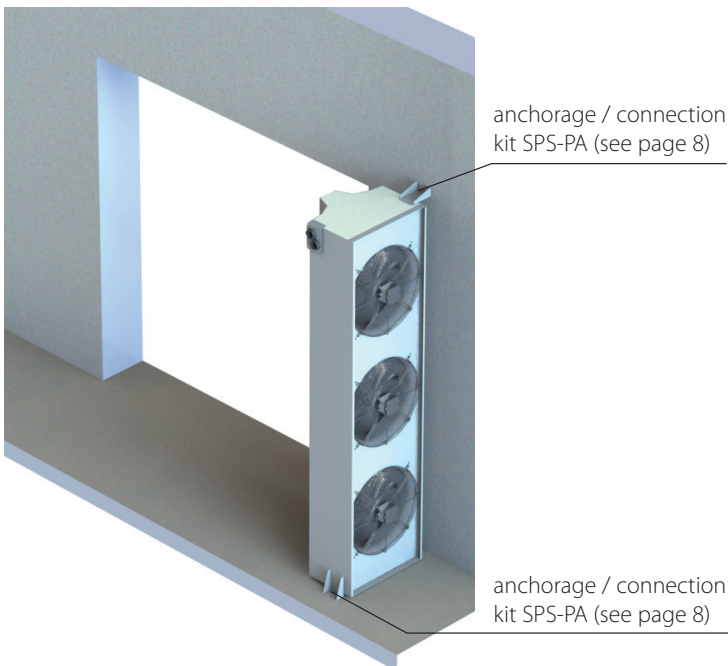
Description

The Axi range of air curtains is designed for industrial application such as production facilities, warehouses and other types of industrial buildings.

HORIZONTAL INSTALLATION



VERTICAL INSTALLATION



Vertical unit standing on the right hand side of the doorway must be specified as "left" (order key THCL) in the order and vice versa. Water connection must be always on top.

Mounting options:

- vertical
- horizontal

Design:

With self-supporting sturdy structure, wide range of heating options, adjustable outlet grilles designed for optimal performance, axial fans with integrated thermocontacts for overload protection and easy-to-install capability, the AXI unit presents an ideal solution for any industrial application.

Heat exchangers:

Standard Axi units come with hot water exchanger. Heating capacity can be controlled by a thermostatic or electrothermic valve using capillary tube. Electric or steam heat exchangers are also available. The unit can be also supplied as an ambient one without heat exchanger.

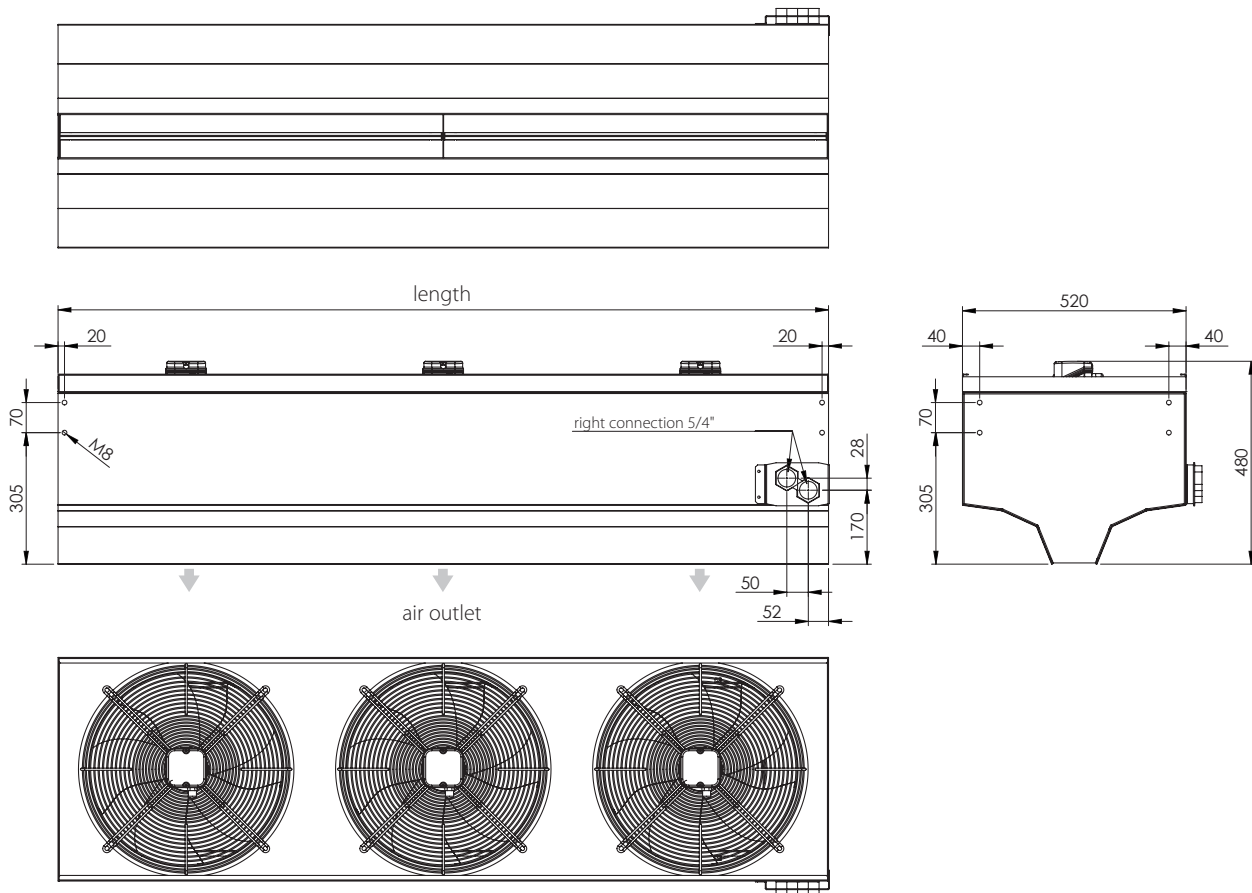
Control:

The air volume can be manually controlled by speed regulator 0-3 steps or using a Δ/Y switch. Additional control options include room thermostat regulation, door contact, MASTER-SLAVE control of multiple units using a single controller, etc.

Mounting:

- Wall
- Ceiling
- Floor



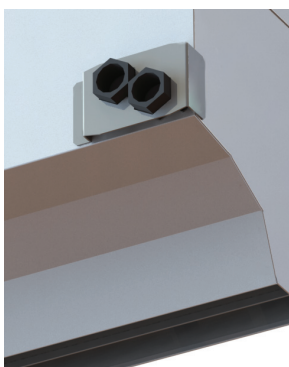


Technical parameters - dimensions

dimensions		TH(V)CP 181, 182, 183, 184 187, 188, 189-AXI	TH(V)CP 211, 212, 213, 214 217, 218, 219-AXI	TH(V)CP 261, 262, 263, 264 267, 268, 269-AXI	TH(V)CP 311, 312, 313, 314 317, 318, 319-AXI
length	[mm]	1800	2100	2600	3100
height	[mm]	480	480	480	480
width	[mm]	520/530*	520/530*	520/530*	520/530*

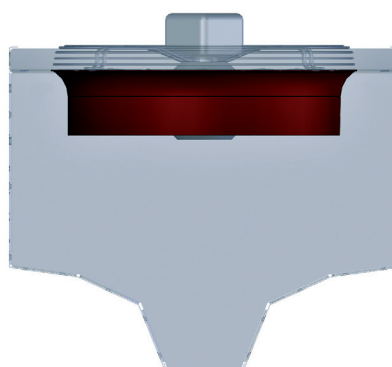
* for types XX4 and XX9 the height is 530 mm

INLET/OUTLET FLANGE BRACKET



Undesired twisting off or tearing away the connection of the heat exchanger (especially during the installation) is prevented thanks to the special protective bracket reinforcing the strained area. This is a standard feature.

INTEGRATED FAN DIFFUSER



All AXI units are equipped with integrated fan diffuser in order to reduce the turbulent air flow inside the unit and thus increase the total air volume. This feature also reduces the noise generated by the fans. Thanks to the integrated fan diffuser the unit is fully compliant with ERP 2015 regulation.

Technical parameters of single phase units with heating (230V)

Dimensions	TH(V)CP-184-4-AXI		TH(V)CP-214-4-AXI		TH(V)CP-264-4-AXI		TH(V)CP-314-4-AXI	
Heat exchanger type	1	2	1	2	1	2	1	2
Air Volume [m ³ /h]	11100	10250	13000	11800	16500	14500	20500	17900
Heating Capacity power [kW]	43,5	58,3	37,8	68,6	49	83,6	61,1	103,9
80/60°C temperature drop [kPa]	6,8	11,5	6,2	17,2	11,7	8,6	20	14,4
Ti 18°C volume flow rate [m ³ /h]	1,87	2,5	0,93	2,95	2,1	3,6	2,63	4,46
Heating Capacity power [kW]	27,5	36,5	23,1	43,4	30,5	52,1	38,3	65,5
60/40°C temperature drop [kPa]	3,2	5,3	2,7	8,1	5,3	3,95	9,3	6,7
Ti 15°C volume flow rate [m ³ /h]	1,19	1,58	1,01	1,87	1,3	2,23	1,66	2,81
Voltage / Power [V]/[kW]	230V/1,17	230V/1,17	230V/1,17	230V/1,17	230V/1,56	230V/1,56	230V/1,95	230V/1,95
Nominal current [A]	6,5	6,5	6,5	6,5	8,6	8,6	10,8	10,8
Acoustic pressure dB[A]**	67	67	67	67	68	68	69	69
Dimensions	TH(V)CP-183-4-AXI		TH(V)CP-213-4-AXI		TH(V)CP-263-4-AXI		TH(V)CP-313-4-AXI	
Heat exchanger type	1	2	1	2	1	2	1	2
Air Volume [m ³ /h]	8800	8200	11500	10200	14375	12800	17200	15300
Heating Capacity power [kW]	38,8	51,6	35,6	63,4	45,8	78,2	56	95,4
80/60°C temperature drop [kPa]	5,5	9,3	5,6	15	10,3	7,7	17,1	12,33
Ti 18°C volume flow rate [m ³ /h]	1,66	2,2	1,51	2,74	1,98	3,35	2,41	4,1
Heating Capacity power [kW]	24,4	32,5	21,8	40,2	28,5	48,9	35,2	60,3
60/40°C temperature drop [kPa]	2,6	4,3	2,5	7,1	4,7	3,5	7,9	5,77
Ti 15°C volume flow rate [m ³ /h]	1,04	1,4	0,94	1,73	1,22	2,09	1,51	2,59
Voltage / Power [V]/[kW]	230/0,78	230/0,78	230/1,04	230/1,04	230/1,3	230/1,3	230/1,56	230/1,56
Nominal current [A]	4,2A	4,2A	5,5A	5,5A	6,9A	6,9A	8,3A	8,3A
Acoustic pressure dB[A]**	65	65	66	66	66	66	67	67
Dimensions	TH(V)CP-182-4-AXI		TH(V)CP-212-4-AXI		TH(V)CP-262-4-AXI		TH(V)CP-312-4-AXI	
Heat exchanger type	1	2	1	2	1	2	1	2
Air Volume [m ³ /h]	7375	7000	9600	8700	12100	10900	14400	13050
Heating Capacity power [kW]	35,4	47,3	32,6	58,1	42,1	71,6	51,3	87,5
80/60°C temperature drop [kPa]	4,7	7,9	4,8	12,8	8,9	6,5	14,6	10,55
Ti 18°C volume flow rate [m ³ /h]	1,51	2,1	1,4	2,5	1,8	3,1	2,2	3,74
Heating Capacity power [kW]	22,3	29,8	20	36,9	26,2	44,8	32,3	55,4
60/40°C temperature drop [kPa]	2,2	3,7	2,1	6,1	4,1	3,01	6,8	4,96
Ti 15°C volume flow rate [m ³ /h]	0,97	1,3	0,86	1,58	1,12	1,94	1,4	2,38
Voltage / Power [V]/[kW]	230/0,5	230/0,5	230/0,66	230/0,66	230/0,83	230/0,83	230/1,0	230/1,0
Nominal current [A]	2,7A	2,7A	3,6A	3,6A	4,5A	4,5A	5,4A	5,4A
Acoustic pressure dB[A]**	59	59	59	59	59	59	60	60
Dimensions	TH(V)CP-181-4-AXI		TH(V)CP-211-4-AXI		TH(V)CP-261-4-AXI		TH(V)CP-311-4-AXI	
Heat exchanger type	1	2	1	2	1	2	1	2
Air Volume [m ³ /h]	5750	5500	8150	7575	10600	9900	13000	12050
Heating Capacity power [kW]	31,1	41,3	30	53,8	39,4	67,9	48,7	83,7
80/60°C temperature drop [kPa]	3,7	6,2	4,1	11,1	7,9	5,9	13,3	9,8
Ti 18°C volume flow rate [m ³ /h]	1,33	1,77	1,3	2,3	1,7	2,92	2,09	3,6
Heating Capacity power [kW]	19,7	26,1	18,5	34,3	24,6	42,6	30,7	53
60/40°C temperature drop [kPa]	1,7	2,9	1,8	5,3	3,6	2,75	6,2	4,6
Ti 15°C volume flow rate [m ³ /h]	0,83	1,12	0,79	1,48	1,04	1,84	1,33	2,27
Voltage / Power [V]/[kW]	230/0,33	230/0,33	230/0,49	230/0,49	230/0,66	230/0,66	230/0,83	230/0,83
Nominal current [A]	1,8A	1,8A	2,7A	2,7A	3,6A	3,6A	4,5A	4,5A
Acoustic pressure dB[A]**	58	58	59	59	59	59	60	60

Technical parameters of single phase units without heating (230V)

Dimensions	SH(V)CP-184-4-AXI		SH(V)CP-214-4-AXI		SH(V)CP-264-4-AXI		SH(V)CP-314-4-AXI	
Air Volume [m ³ /h]	14400		15400		20100		25500	
Voltage / Power input [V]/[kW]/[A]	230V/1,2kW/6,5A		230V/1,2kW/6,5A		230V/1,6kW/8,6A		230V/1,95kW/10,8A	
Acoustic pressure dB[A]**	67		68		68		69	
Dimensions	SH(V)CP-183-4-AXI		SH(V)CP-213-4-AXI		SH(V)CP-263-4-AXI		SH(V)CP-313-4-AXI	
Air Volume [m ³ /h]	10600		13400		16500		19950	
Voltage / Power input [V]/[kW]/[A]	230V/0,8kW/4,2A		230V/1,0kW/5,5A		230V/1,3kW/6,9A		230V/1,6kW/8,3A	
Acoustic pressure dB[A]**	67		68		68		69	
Dimensions	SH(V)CP-182-4-AXI		SH(V)CP-212-4-AXI		SH(V)CP-262-4-AXI		SH(V)CP-312-4-AXI	
Air Volume [m ³ /h]	8250		10850		13500		16050	
Voltage / Power input [V]/[kW]/[A]	230V/0,5kW/2,7A		230V/0,7kW/3,6A		230V/0,83kW/4,5A		230V/1,0kW/5,4A	
Acoustic pressure dB[A]**	59		59		59		60	
Dimensions	SH(V)CP-181-4-AXI		SH(V)CP-211-4-AXI		SH(V)CP-261-4-AXI		SH(V)CP-311-4-AXI	
Air Volume [m ³ /h]	6200		8500		11600		13900	
Voltage / Power input [V]/[kW]/[A]	230V/0,3kW/1,8A		230V/0,5kW/2,7A		230V/0,7kW/3,6A		230V/0,83kW/4,5A	
Acoustic pressure dB[A]**	58		59		59		60	

** Acoustic pressure measured from the distance of 5 m from the unit

Technical parameters of three phase units with heating (400V)

Dimensions	TH(V)CP-189-4-AXI		TH(V)CP-219-4-AXI		TH(V)CP-269-4-AXI		TH(V)CP-319-4-AXI	
Heat exchanger type	1	2	1	2	1	2	1	2
Air Volume [m³/h]	11100	10250	13000	11800	16500	14500	20500	17900
Heating Capacity power [kW]	43,5	58,3	37,8	68,6	49	83,6	61,1	103,9
80/60°C temperature drop [kPa]	6,8	11,5	6,2	17,2	11,7	8,6	20	14,4
Ti 18°C volume flow rate [m³/h]	1,87	2,5	0,93	2,95	2,1	3,6	2,63	4,46
Heating Capacity power [kW]	27,5	36,5	23,1	43,4	30,5	52,1	38,3	65,5
60/40°C temperature drop [kPa]	3,2	5,3	2,7	8,1	5,3	3,95	9,3	6,7
Ti 15°C volume flow rate [m³/h]	1,19	1,58	1,01	1,87	1,3	2,23	1,66	2,81
Voltage / Power [V]-[ΔY kW]	400-1,4/1,0	400-1,4/1,0	400-1,4/1,0	400-1,4/1,0	400-1,8/1,4	400-1,8/1,4	400-2,3/1,7	400-2,3/1,7
Nominal current [ΔY A]	2,9/2,0A	2,9/2,0A	2,9/2,0A	2,9/2,0A	3,9/2,7A	3,9/2,7A	4,9/3,3A	4,9/3,3A
Acoustic pressure dB[A]**	67	67	67	67	68	68	69	69

Dimensions	TH(V)CP-188-4-AXI		TH(V)CP-218-4-AXI		TH(V)CP-268-4-AXI		TH(V)CP-318-4-AXI	
Heat exchanger type	1	2	1	2	1	2	1	2
Air Volume [m³/h]	8800	8200	11500	10200	14375	12800	17200	15300
Heating Capacity power [kW]	38,8	51,6	35,6	63,4	45,8	78,2	56	95,4
80/60°C temperature drop [kPa]	5,5	9,3	5,6	15	10,3	7,7	17,1	12,33
Ti 18°C volume flow rate [m³/h]	1,66	2,2	1,51	2,74	1,98	3,35	2,41	4,1
Heating Capacity power [kW]	24,4	32,5	21,8	40,2	28,5	48,9	35,2	60,3
60/40°C temperature drop [kPa]	2,6	4,3	2,5	7,1	4,7	3,5	7,9	5,77
Ti 15°C volume flow rate [m³/h]	1,04	1,4	0,94	1,73	1,22	2,09	1,51	2,59
Voltage / Power [V]-[ΔY kW]	400-0,8/0,5	400-0,8/0,5	400-1,0/0,7	400-1,0/0,7	400-1,3/0,9	400-1,3/0,9	400-1,6/1,1	400-1,6/1,1
Nominal current [ΔY A]	1,8/1,0A	1,8/1,0A	2,4/1,4A	2,4/1,4A	3,0/1,7A	3,0/1,7A	3,6/2,1A	3,6/2,1A
Acoustic pressure dB[A]**	65	65	66	66	66	66	67	67

Dimensions	TH(V)CP-187-4-AXI		TH(V)CP-217-4-AXI		TH(V)CP-267-4-AXI		TH(V)CP-317-4-AXI	
Heat exchanger type	1	2	1	2	1	2	1	2
Air Volume [m³/h]	7375	7000	9600	8700	12100	10900	14400	13050
Heating Capacity power [kW]	35,4	47,3	32,6	58,1	42,1	71,6	51,3	87,5
80/60°C temperature drop [kPa]	4,7	7,9	4,8	12,8	8,9	6,5	14,6	10,55
Ti 18°C volume flow rate [m³/h]	1,51	2,1	1,4	2,5	1,8	3,1	2,2	3,74
Heating Capacity power [kW]	22,3	29,8	20	36,9	26,2	44,8	32,3	55,4
60/40°C temperature drop [kPa]	2,2	3,7	2,1	6,1	4,1	3,01	6,8	4,96
Ti 15°C volume flow rate [m³/h]	0,97	1,3	0,86	1,58	1,12	1,94	1,4	2,38
Voltage / Power [V]-[ΔY kW]	400-0,6/0,4	400-0,6/0,4	400-0,8/0,6	400-0,8/0,6	400-1,0/0,7	400-1,0/0,7	400-1,1/0,8	400-1,1/0,8
Nominal current [ΔY A]	1,4/1,0A	1,4/1,0A	1,9/1,3A	1,9/1,3A	2,4/1,7A	2,4/1,7A	2,9/2,0A	2,9/2,0A
Acoustic pressure dB[A]**	59	59	59	59	59	59	60	60

Technical parameters of three phase units without heating (400V)

Dimensions	SH(V)CP-189-4-AXI		SH(V)CP-219-4-AXI		SH(V)CP-269-4-AXI		SH(V)CP-319-4-AXI	
Air Volume [m³/h]	14400		15400		20100		25500	
Voltage / Power input [V]-[ΔY kW]-[ΔY A]	400V-1,35/1,02kW-2,9/2,0A		400V-1,35/1,02kW-2,9/2,0A		400V-1,8/1,4kW-3,9/2,7A		400V-2,3/1,7kW-4,9/3,3A	
Acoustic pressure dB[A]**	67		68		68		69	

Dimensions	SH(V)CP-188-4-AXI		SH(V)CP-218-4-AXI		SH(V)CP-268-4-AXI		SH(V)CP-318-4-AXI	
Air Volume [m³/h]	10600		13400		16500		19950	
Voltage / Power input [V]-[ΔY kW]-[ΔY A]	400V-0,8/0,5kW-1,8/1,0A		400V-1,0/0,7kW-2,4/1,4A		400V-1,3/0,9kW-3,0/1,7A		400V-1,6/1,1kW-3,6/2,1A	
Acoustic pressure dB[A]**	67		68		68		69	

Dimensions	SH(V)CP-187-4-AXI		SH(V)CP-217-4-AXI		SH(V)CP-267-4-AXI		SH(V)CP-317-4-AXI	
Air Volume [m³/h]	8250		10850		13500		16050	
Voltage / Power input [V]-[ΔY kW]-[ΔY A]	400V-0,6/0,4kW-1,4/1,0A		400V-0,8/0,6kW-1,9/1,3A		400V-1,0/0,7kW-2,4/1,7A		400V-1,1/0,8kW-2,9/2,0A	
Acoustic pressure dB[A]**	59		59		59		60	

Controllers

Controller type	O3	O5	O7	OT4	OT8	OT10	OT15	ROJ light 14-10	ROJ light 30-10	RT4	RT8	RT10	RT15	ROJ 14-20	ROJ 30-20	ROT4	ROT10	ROT15
Voltage	230V	230V	230V	400V	400V	400V	400V	230V	230V	400V	400V	400V	400V	230V	230V	400V	400V	400V
max. current of the unit (units)	3 A	5 A	7 A	4 A	8 A	10 A	15 A	14 A	30 A	4 A	8 A	10 A	15 A	14 A	30 A	4 A	10 A	15 A
door contact	—	—	—	—	—	—	—	✓	✓	✓	✓	✓	✓	✓	✓	✓	✓	✓
door contact timer	—	—	—	—	—	—	—	✓	✓	✓	✓	✓	✓	✓	✓	✓	✓	✓
door contact override	—	—	—	—	—	—	—	—	—	—	—	—	—	—	—	—	—	—
room thermostat	✓	✓	✓	✓	✓	✓	✓	✓	✓	✓	✓	✓	✓	✓	✓	✓	✓	✓
external regulator	—	—	—	—	—	—	—	—	—	—	—	—	—	LS-AX-03	—	LS-AXT-02	—	—
anti-frost protection*	—	—	—	—	—	—	—	—	—	—	—	—	—	✓	✓	✓	✓	✓
electrothermic valve + pump	—	—	—	—	—	—	—	—	—	—	—	—	—	✓	✓	✓	✓	✓
automatic mode	—	—	—	—	—	—	—	—	—	—	—	—	—	✓	✓	✓	✓	✓
chained control	—	—	—	—	—	—	—	—	—	—	—	—	—	✓	✓	✓	✓	✓

* controller is configured for use with these features - if these accessories are not part of the delivery - please specify in the order form

Controllers

Controllers O3, O5, O7, OT4, OT8, OT10, OT15

Fan speed control without external or door contact connectivity. Thermostat regulation available.

Supply voltage: 230V, 50/60Hz
Degree of protection: IP 22



ROJ 14-10 light a ROJ 30-10 light

Switchboard for fan speed regulation with door contact and room thermostat connectivity.

Supply voltage: 230V, 50/60Hz
Degree of protection: IP 22



ROJ light 14(30)-10

Version 230V O3, O5, O7, O10 - voltage regulator 0-1-2-3-4-5
Dimensions O5 (w*h*d) - 105*203*106
Dimensions O7 (w*h*d) - 105*203*106
Dimensions O10 (w*h*d) - 147*278*140

Version 230V ROJ 14-10 light, ROJ 30-10 light
- voltage regulator 0-1-2-3
ROJ 14-10 light (w*h*d) - 180*320*135
ROJ 30-10 light (w*h*d) - 220*350*175

Version 400V OT4, OT8, OT10, OT15 - switch Δ/Y 0-1-2
Dimensions OT4, OT8 (w*h*d) - 150*280*110
Dimensions OT10, OT15 (w*h*d) - 150*280*110

Version 400V RT4, RT8, RT10, RT15 - switch Δ/Y 0-1-2
Dimensions RT4, RT8 (w*h*d) - 150*280*110
Dimensions RT10 (w*h*d) - 150*280*110
Dimensions RT15 (w*h*d) - 150*280*110

Switchboard ROJ 14-20, ROJ 30-20, ROT 4, ROT 10, ROT 15

Switchboard for fan speed regulation with door contact and room thermostat connectivity. Additional chaining options available.

Supply voltage: 230V, 50/60Hz (400V)
Degree of protection: IP 22



LS-AX-03
LS-AXT-02

ROJ 14(30)-20

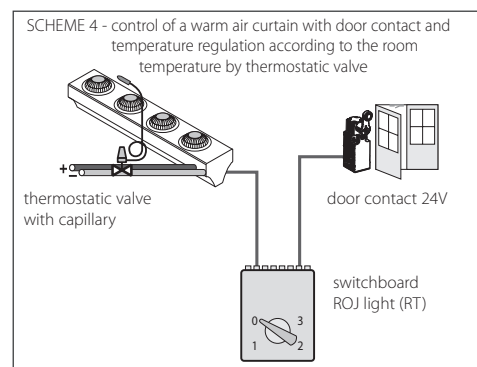
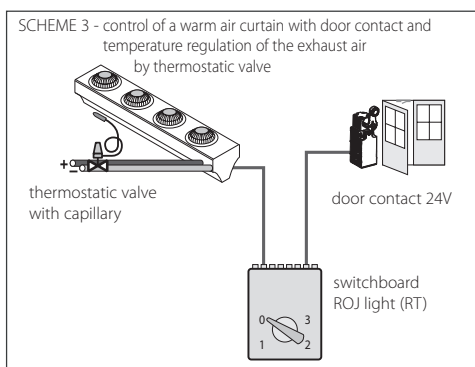
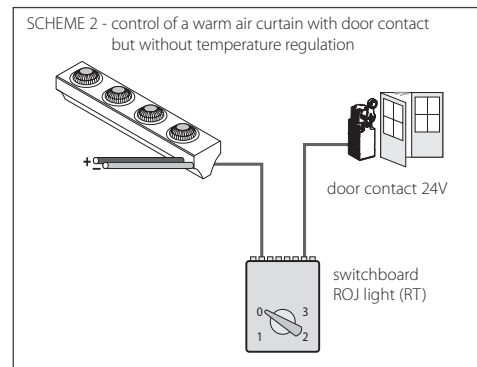
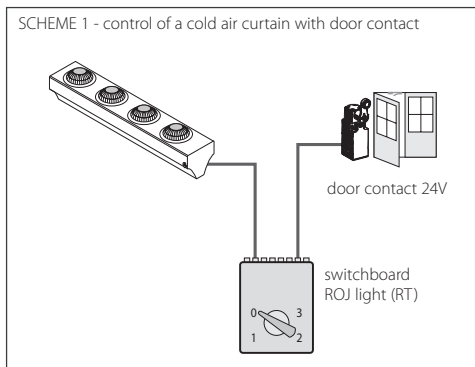
Version 230V ROJ 14-20, ROJ 30-20 voltage regulator 0-1-2-3
ROJ 14-20 (w*h*d) - 400*500*200
ROJ 30-20 (w*h*d) - 400*600*200

Version 400V ROT 4, ROT 10, ROT 15 - switch Δ/Y 0-1-2
Degree of protection: IP 44 Dimensions ROT 4 (w*h*d) - 300*400*150
Dimensions ROT 10 (w*h*d) - 300*400*150
Dimensions ROT 15 (w*h*d) - 300*400*150

Dimensions of external control
Version 230V LS-AX-03 (w*h*d) - 180*94*81 mm

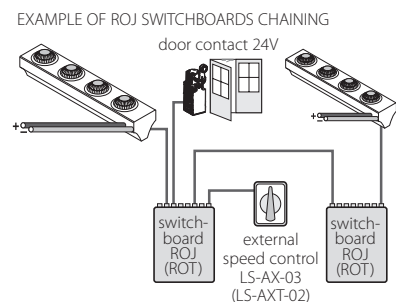
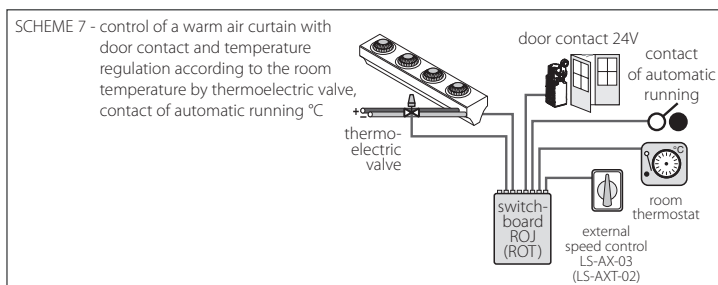
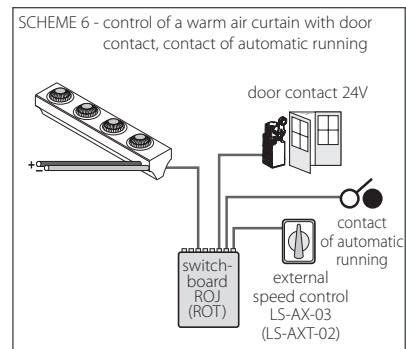
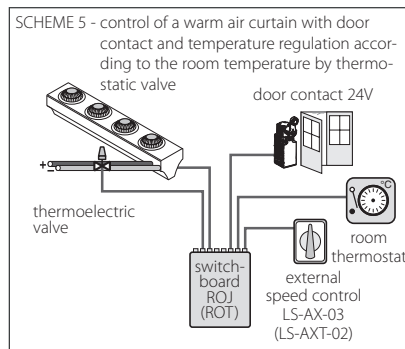
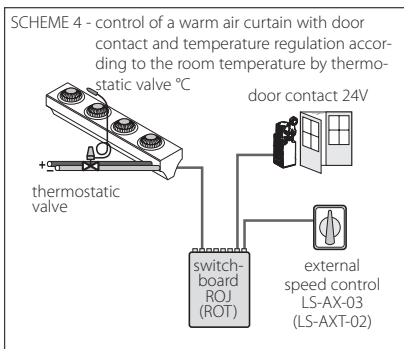
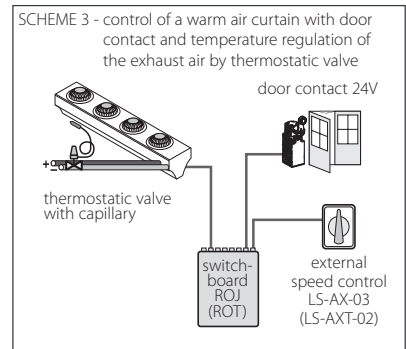
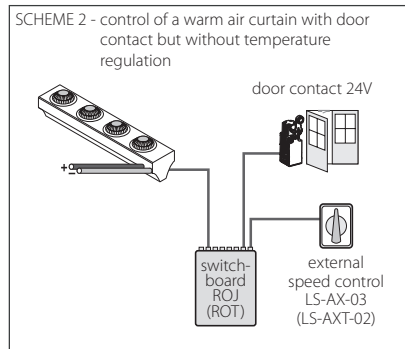
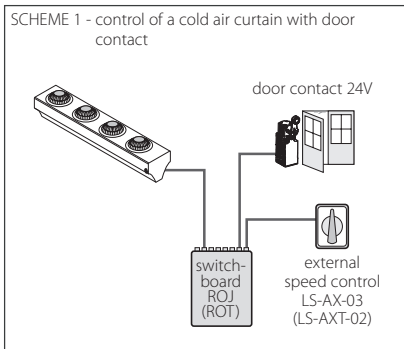
When specifying a switchboard do not exceed the maximum current (amperage) of all air curtains that will be connected to the switchboard!!!
! ATTENTION - detailed wiring diagrams will be provided with the unit - ATTENTION !

Connection possibilities for the ROJ light switchboards:*



* for 230V, for 400V RT

Connection possibilities for the ROJ switchboards *



* for 230V, for 400V ROT

Accessories: (TP1, TP2)

ROOM THERMOSTAT TP 1:

range 5-35°C; IP 30; 230V/3A/AC-15

ROOM THERMOSTAT TP 2: with summer/winter switch:

range 5-35°C; IP 30; 230V/3A/AC-15



(DKM)

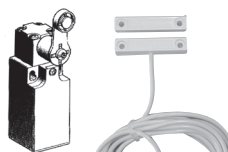
MECHANICAL DOOR CONTACT: mechanical pinned contact;

IP65; 230V/3A/AC-15

(DKMG)

MAGNETIC DOOR CONTACT: magnetic contact;

load 24V/0, 25A/AC-15



AUTOMATIC MODE INPUT:

integrated in the switchboard (standard feature), enabled only when unit operation is required along with door contact at closed door (first fan speed level only).

This input can be used for any feature (room thermostat, external switch, etc.); 230V/3A/AC-15



THERMOSTATIC VALVE WITH CAPILLARY: For water heated units only. Provides exhaust or room temperature regulation.

Range 20-50°C; connection 1"; 5/4" - technical parameters of the valve available upon request.

THERMOELECTRIC VALVE: For water heated units only. Provides room temperature regulation operated by room thermostat with inbuilt output for pump regulation from the switchboard.

Connection - technical parameters of the valve available upon request.



(PTT) ANTI-FROST THERMOSTAT PTT: Range: 5-25°C; IP 44

When an anti frost thermostat detects freezing conditions the air curtains fans are switched off and the electrothermic valve is opened.



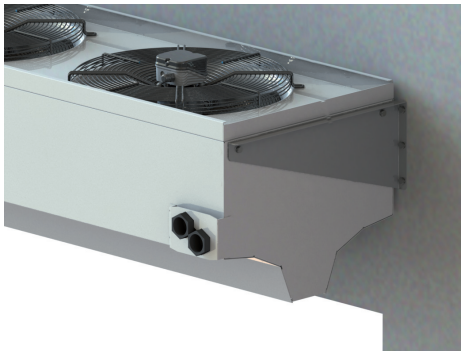
EXTERNAL DIGITAL CLOCK:

Input for 230V/3A/AC-15, provides remote control of the unit.

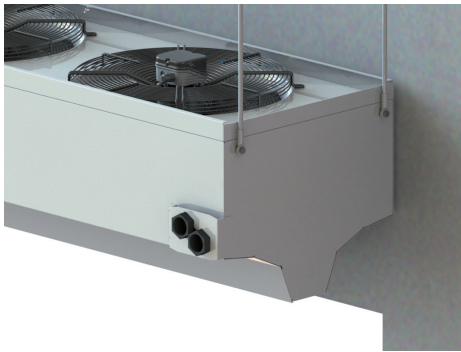
CONNECTION PIPES: Flexible connection pipes

- 2 pcs for max. temperature 110°C, standard length 300mm; 1" or 5/4"

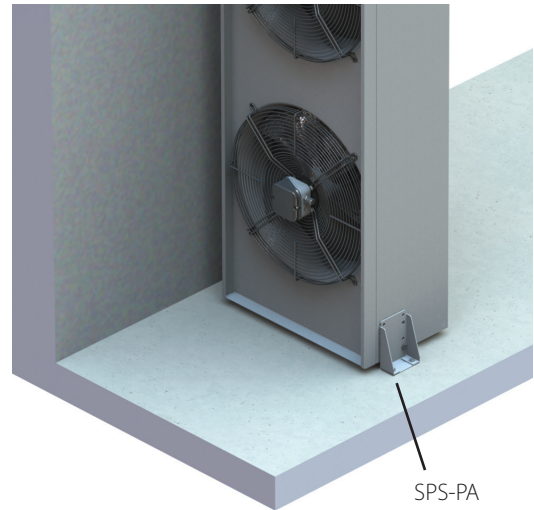




Mounting accessory
- wall suspension



Mounting accessory
- ceiling suspension



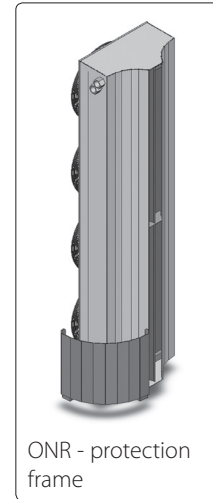
Mounting accessory
- floor anchorage (unit connection kit)

SPS-PA
connection kit

Order key:

T - HC - P - 213 - 4 - AXI

Type	Unit orientation	Heat exchanger version	Unit length, performance rating
<p>S - ambient unit (without heat exchanger)</p> <p>T - unit with hot water or electrical heat exchanger (other heat exchanger types available upon request - e.g. steam)</p>	<p>VC - vertical air curtain</p> <p>HC - horizontal air curtain</p>	<p>P - right connection (from indoor perspective)</p> <p>L - left connection (from indoor perspective)</p>	<p>189 - perform. level 4; 400V • length 1800 mm</p> <p>188 - perform. level 3; 400V • length 1800 mm</p> <p>187 - perform. level 2; 400V • length 1800 mm</p> <p>184 - perform. level 4; 230V • length 1800 mm</p> <p>183 - perform. level 3; 230V • length 1800 mm</p> <p>182 - perform. level 2; 230V • length 1800 mm</p> <p>181 - perform. level 1; 230V • length 1800 mm</p> <p>219 - perform. level 4; 400V • length 2100 mm</p> <p>218 - perform. level 3; 400V • length 2100 mm</p> <p>217 - perform. level 2; 400V • length 2100 mm</p> <p>214 - perform. level 4; 230V • length 2100 mm</p> <p>213 - perform. level 3; 230V • length 2100 mm</p> <p>212 - perform. level 2; 230V • length 2100 mm</p> <p>211 - perform. level 1; 230V • length 2100 mm</p> <p>269 - perform. level 4; 400V • length 2600 mm</p> <p>268 - perform. level 3; 400V • length 2600 mm</p> <p>267 - perform. level 2; 400V • length 2600 mm</p> <p>264 - perform. level 4; 230V • length 2600 mm</p> <p>263 - perform. level 3; 230V • length 2600 mm</p> <p>262 - perform. level 2; 230V • length 2600 mm</p> <p>261 - perform. level 1; 230V • length 2600 mm</p> <p>319 - perform. level 4; 400V • length 3100 mm</p> <p>318 - perform. level 3; 400V • length 3100 mm</p> <p>317 - perform. level 2; 400V • length 3100 mm</p> <p>314 - perform. level 4; 230V • length 3100 mm</p> <p>313 - perform. level 3; 230V • length 3100 mm</p> <p>312 - perform. level 2; 230V • length 3100 mm</p> <p>311 - perform. level 1; 230V • length 3100 mm</p>



ONR - protection
frame

Accessories

- ceiling suspension
- wall suspension
- thermostatic valve with remote capillary sensor
- door contact

Custom features:

- anti-frost thermostat
- corrosion-free bodywork

Representative: